



ENGINEERING, HEAVY ELECTRICALS, MANUFACTURING AND CONSTRUCTION SECTORS

Profile of Indian Public Sector Enterprises



CONTENTS

A. MANUFACTURING

1. HEAVY ENGINEERING & ELECTRICALS

1.1	BHARAT HEAVY ELECTRICALS LTD	1
1.2	BHEL ELECTRICAL MACHINES LTD	3
1.3	HEAVY ENGINEERING CORPORATION LTD	5

2. MEDIUM & LIGHT ENGINEERING

2.1	ANDREW YULE & COMPANY LTD	7
2.2	BHARAT PUMPS & COMPRESSORS LTD	11
2.3	HMT LTD	13
2.4	HMT MACHINE TOOLS LTD	15
2.5	INSTRUMENTATION LTD	18
2.6	RAJASTHAN ELECTRONICS & INSTRUMENTS LTD	20
2.7	RICHARDSON & CRUDDAS (1972) LTD	22
2.8	SCOOTERS INDIA LTD	24

3. CONSUMER PRODUCTS

3.1	CEMENT CORPORATION OF INDIA LTD	26
3.2	HINDUSTAN PAPER CORPORATION LTD	28
	3.2.1 HINDUSTAN NEWSPRINT LTD	
	3.2.2 NAGALAND PULP & PAPER COMPANY LTD	
3.3	HINDUSTAN SALTS LTD	30
	3.3.1 SAMBHAR SALTS LTD	
3.4	HOOGHLY PRINTING COMPANY LTD	32
3.5	NEPA LTD	33

B. CONSTRUCTION & PROJECTS

4. PROJECTS & INTERNATIONAL MARKETTING

4.1	HMT (INTERNATIONAL) LTD	35
-----	-------------------------	----

5. CONTRACT & CONSTRUCTION SERVICES

5.1	BRAITHWAITE BURN & JESSOP CONSTRUCTION COMPANY LTD	37
5.2	BRIDGE & ROOF CO. (INDIA) LTD	39
5.3	ENGINEERING PROJECTS (INDIA) LTD	41



BHARAT HEAVY ELECTRICALS LIMITED

India's Industrial Ambassador to the World

Bharat Heavy Electricals Limited (BHEL) is an integrated power plant equipment manufacturer and one of the largest engineering and manufacturing company of its kind in India. The company is engaged in the design, engineering, manufacture, construction, testing, commissioning and servicing of a wide range of products and services for the core sectors of the economy, viz. Power (Thermal, Gas, Hydro, Solar and Nuclear), Transmission, Industry, Transportation (Railways), Renewable Energy, Oil & Gas and Defence with over 180 products offerings to meet the needs of these sectors. BHEL has been the solid bedrock of India's Heavy Electrical Equipment industry since its evolution in 1964.

A widespread network of 17 Manufacturing Divisions, 2 Repair Units, 4 Regional Offices, 8 Service Centres, 6 Overseas Offices, 6 Joint Ventures, 15 Regional Marketing Centres and current project execution at more than 150 project sites across India and abroad corroborates the humongous scale and size of BHEL's operations.



POWER



TRANSMISSION



INDUSTRY



TRANSPORTATION



RENEWABLES



OIL & GAS



DEFENCE



WATER

Adding to its achievements, BHEL has joined the elite club of select global giants having an installed base of over 150 GW of power generating equipment globally. The fact that the company's global footprints span across 77 countries with presence in all the inhabited continents, speaks volumes about the contribution made by BHEL to the power sector worldwide.

BHEL adheres to the highest level of quality, reliability and international standards. Most of its manufacturing units and other entities have been accredited to Quality Management Systems (ISO 9001:2008), Environmental Management Systems (ISO 14001:2004) and Occupational Health & Safety Management Systems (OHSAS 18001:2007).

BHEL: Reliable Partner in Africa

BHEL is an active participant in Africa's progressing growth story, starting its journey with the turnkey execution of 2x120 MW extension of the Tripoli West Power Station in Libya in 1970s.

Since then, BHEL's references have spread across 21 countries including Algeria, Burundi, Comoros, Democratic Republic of Congo, Egypt, Ethiopia, Ghana, Kenya, Libya, Malawi, Mauritius, Nigeria, Rwanda, Senegal, South Africa, Sudan, Swaziland, Tanzania, Uganda, Zambia and Zimbabwe.



500 MW Kosti Thermal Power Station, Sudan

Presently, BHEL is executing orders for cogeneration packages of 120 MW in Ethiopia, thermal power project of 125 MW in Senegal and hydroelectric power project of 64 MW capacity in Democratic Republic of Congo along with an HFO based power plant of 18 MW in Comoros Islands.



230 kV Substation, Ethiopia



600 MW Western Mountain Gas Power Plant, Libya

The company has several milestones in Africa viz. 1174 MW of installed capacity in Libya, recently completed 500 MW Kosti Thermal Power Station in Sudan which is the largest power plant in Sudan, setting up 28 MW Nyaborango Hydro-Electric Power Project in Rwanda on turnkey basis, which was inaugurated by the Hon'ble President of the Republic of Rwanda. BHEL equipment is also lighting homes and industries in Ethiopia from the 2x12 MW power plant set up for M/s Finchaa Sugar, Ethiopia.



28 MW Nyaborango Hydroelectric Plant, Rwanda

Visit us at www.bhel.com
Phone : +91 11 41793299/282
Email : exports@bhel.in
Fax : +91 11 24368406, 24367130



BHEL Electrical Machines Ltd.

BHEL Electrical Machines Limited (BHEL EML), a subsidiary of BHEL, was formed as Joint Venture between Bharat Heavy Electricals Limited and Government of Kerala in 2011 with 51:49 share holding, acquiring the Kasaragod Unit of Kerala Electrical & Allied Engineering Company Limited, a State Public Sector Enterprise, alongwith its Infrastructure, Product Portfolio with IPR and Human Resources, with an initial invested capital of INR 10.5 Cr.

Products & Services

Railway Segment

Traction Alternators

- 194 KW – For Diesel Electric Tower Car
- 350 HP – For Railways
- 960 KW – for High Horse Power DEMU

Power Cars

- 500 KVA – for High Capacity Power Car
- 320 KVA – for Underslung Power Car
- 500 KVA – for Underslung Power Car

Other applications

- 25 KW Train Lighting Alternator
- 125 KVA – For Self Propelled Accident Relief Train
- 500 KVA, dual speed–For Dynamic Track Stabilizer
- 18.5/25 KW Auxiliary Alternator for DEMU

Non-Railway Segment

General purpose Alternators (Brushless)

Ratings – 15KVA to 1500 KVA (LT)

Diesel Generating Sets

Ratings – 15 KVA to 1500 KVA (LT)
(with/without Acoustic Enclosure)

Induction Motors

Ratings – 37 KW to 300 KW (LT)
(TEFC, IP 55, Squirrel Cage)

Special Purpose Alternators

High Frequency Alternators (for Defence)
75/90 KVA, 400 HZ, 1500 RPM BPSV
(for Indian Armed Forces)

100 KVA, 400 HZ, 1500 RPM Ground Power Unit
(for Radar Applications)

20 KVA, 400 HZ, 2000 RPM
(for Indian Airforce)

Alternators with Special Protection Class (e.g. IP54)

Low RPM Alternators

(for Alternate Energy Applications)

Marine Duty Alternators

(for Vessels and Offshore Rigs)

BHEL EML - PRODUCT DETAILING

General Purpose Alternators

- 15 kVA to 1500 kVA
- Single/Three Phase
- Up to 750 Volts
- 50/60 Hz; 1500/1800 RPM
- Single/Double Bearing
- Compound Excitation



Special Purpose Alternators

Train Lighting Alternators

- Used for Lighting and Air Conditioning of self-generated coaches
- Ratings up to 25 kW

Auxiliary Alternators

- Inductor Type
 - Auxiliary power supply of DEMU (Diesel Electric Multiple Unit)
 - Ratings up to 25 kW
- Salient Pole Type
 - Auxiliary power supply of 4000 HP Diesel Loco
 - Rating 18kW

Power Car Alternators

- For End on Generation Power Cars
 - for Express Trains like Rajdhani, Shatabdi, Palace on Wheels, etc.
 - Ratings upto 500 kVA
- For Underslung Power Packs
 - Ratings upto 500 kVA

Marine Alternators

- Ratings upto 1000 kW

High Frequency (400 Hz) Alternators

- 2000 RPM, 24 Pole & 1500 RPM, 32 Pole
- Ratings up to 300 kVA

Low RPM (600 RPM) Alternators

- For Alternate Energy solutions
- Ratings up to 300 kVA

Traction Alternators

- 1400 HP for Diesel Electric Multiple Units
- 350 HP for Angolan / Senegal Railways
- 194 kW for Diesel Electric Tower Car
- 500 kVA for Dynamic Track Stabilizer



DG Sets

- **For Standby Power (Process Industries)**
 - Rating from 15 kVA to 1500 kVA
- **For Rolling Stock Applications**
 - Power Cars for Railways
- **For High Frequency Power Packs**
 - Mobile Defence Applications
- **For Ground Power Units**
 - For Aircrafts

Induction Motors

- High Efficiency TEFC Squirrel Cage Induction Motors for Industrial Applications
- Ratings up to 300 kW



Registered & Corporate Office :
Bedradka Post, Kasaragod -671124, Kerala, India
Phone : +91 4994 232316 / 25 / 26
Fax : +91 4994 232320
E-mail : info@bheleml.com, Website : www.bheleml.com



Heavy Engineering Corporation Ltd.

Heavy Engineering Corporation Ltd., is one of the leading suppliers of capital equipment in India for steel, mining, railways, power, defense, space research, nuclear and strategic sectors. It also executes turn-key projects from concept-to-commissioning. Set-up in the year 1958, HEC has acquired expertise in its field through its more than half a century's experience.

With the seamless integration of its facilities, HEC is one of the largest integrated engineering complex. Sprawling in an area of around 2100,000 sq.m, HEC has facilities starting from steel melting, casting, forging, fabrication, machining, assembly and testing. It has its own in-house research and product development wing to deliver products suiting customers' specifications.

HEC is headquartered at Ranchi, the capital city of Jharkhand, in eastern part of India, and also has its manufacturing facilities located here. A well-suited location nearing to customer sites and proximity to the ports, is an added advantage for its cost-effectiveness.

Founded primarily to facilitate manufacture of steel plant equipment indigenously, HEC has made immense contribution in setting-up, expansion and modernization of steel plants in India. In due course, HEC had diversified to different sectors and made commendable contributions towards manufacture and supply of import-substitute products. Bestowed with the onus of making the country self-reliant for heavy engineering equipment and services, HEC continues to contribute in the nation-building endeavor.

HEC has following four operating units out of which three are manufacturing units:-

- Heavy Machine Building Plant
- Foundry Forge Plant
- Heavy Machine Tools Plant
- Project Division (Service & Consultancy Division)

Products and Services

The Company manufactures and supplies :

- Steel plant equipment
- EOT Cranes
- Mineral processing equipment
- Mining equipment: 5/10 cum Excavators, 24/96 m Dragline
- Spares for Steel and Mining sector
- Heavy Castings & Forgings
- Forged Rolls
- CNC & Conventional Machine tools
- Equipment for strategic sector

The Project Division of HEC executes Turn-key Projects from concept to commissioning. The field of specialization are :-

- Coal / Ore Handling Plants
- Coal Washeries

Steel Plant Equipment :

HEC supplied plant and equipment to almost all the integrated steel plants of India and contributed significantly to Bokaro, Bhilai and Vizag Steel Plant.

Supplies include equipment and machineries in the following areas:

- Blast Furnace
- Coke-ovens
- Converters
- Continuous Casters
- Sinter Plants
- Cranes
- Forged Rolls etc.



Heavy Castings and Forgings

HEC has facilities to make and handle 120T liquid metal to manufacture a single Casting or Forging.

- Steel casting 65 T piece weight
- Iron Casting 70 T
- Steel forging 65 T
- Ring Forging – upto 4.2 m dia



Mining Equipment

HEC pioneered manufacturing of Excavator in 1966 which is treated as a significant step towards mechanization of mining.

Currently the following are in the product profile :

- Electric Rope Shovel 5 CuM
- Electric Rope Shovel 10 CuM
- Dragline 24 CuM, 96 m



Crusher

HEC offers complete crushing solution.

Gyratory crusher | Cone Crusher | Jaw Crusher | Roll Crusher | Hammer mill | Rod Mill etc.



Turn-key Project Execution

HEC executes turnkey projects from concept to commissioning of:

- Bulk Material handling
- Coal preparation (Washery)
- Coal Carbonization plant



Machine Tools

HEC designs and manufacture CNC and conventional Machine Tools for various applications like General Engineering, Defence, Railway, Steel Plants etc.

- Lathe
- Vertical Turning & Boring Machine
- Horizontal Boring Machine
- Planning & Plano-Milling
- Radial Drill
- Deep Hole Boring Machine (SPM)

Special Purpose Railway Machine tools :

- Surface Wheel Lathe
- Under floor wheel Lathe
- Axle Journal Turning & Burnishing



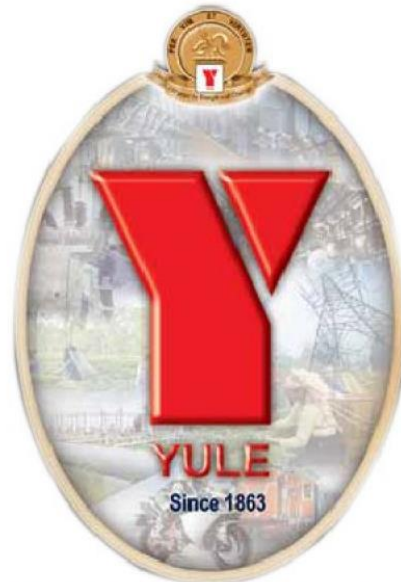
Space Research

HEC significantly contributed to the infrastructure building of Indian Space Research Programme.

- Mobile launch pad
- Folding cum Vertically repositionable platform for vehicle assembly tower
- Cranes 400 T, 200 T special EOT crane etc
- Tower crane at the top of umbilical tower
- Ring forging (4.2 m dia) for VSSC



ANDREW YULE & CO. LTD.



Engineering Division



Electrical Division



Tea Division



Group & Subsidiary Companies ...

Tide Water Oil Co.(India) Ltd.



Hooghly Printing Co. Ltd.



Webfil Limited



Andrew Yule is a 152 years multi divisional Public Sector conglomerate under the Ministry of Heavy Industries and Public Enterprise, Government of India, with various business portfolios, starting from Engineering, electrical to tea and printing along with group companies operating in lubrication, electronics & digital communication business. Various changes in the economic situation as well as socioeconomic conditions could never dampen the tradition and heritage of the Company and its business growth. The Company always had the resilience to withstand the vicissitudes and the test of time. Today, the Andrew Yule Group has a turnover of Rs. 1,500 crore and it employs about 15,000 people.

ELECTRICAL DIVISION

The Electrical Division occupies a key position in the company's multifarious activities and caters to the needs of different Electricity Boards and Industries through well-equipped factories and network of offices in the country. The division contributes significantly in System Improvement and line loss saving measures of different power utilities through its comprehensive and wide product package; being manufactured with proven and state-of-the-art technology.



11 KV Indoor VCB Panel

Model	VBTQ-C	
Type of Isolation	Horizontal Isolation	
Rated Voltage	KV	Up to 12
Frequency	HZ	50
Rated current	Amp	1600
Applicable Standard	IS 13118: IEC 62271-100 IEC 62271-200	

33 KV Outdoor PC VCB a Control Relay Panel

Rated Voltage	(KV)	36
Frequency	(Hz)	50
Rated Nominal Current	(Amp)	1250/1600
Rated Short Time withstand Current	(KA)	25
Applicable Standard	IS 13118: IEC 62271-100 IEC 62271-200	



Compact Sub-Station



Rated Max. KVA	2000 KVA
Rated Voltage	11 KV (RMS)

Unitised Sub-Station



Transformer Rating	Up to 2 MVA
VCB Rating	Up to 1250 A, 25 KA

LT Controlgears



LV Contactor
RANGE : Upto 800 A



Thermal Over Load Relay
RANGE : From 0.28 A to 630 A



Moulded Case Circuit Breaker
RANGE – Upto 630Amps

Automatic Voltage Regulator



RANGE : 33KV Class Upto 8MVA

TESTING REGULATOR :

Upto 2.5MVA 0-11kV with input 40 or 11000 Volt

It is basically a continuous tapped auto transformer with the aid of roller contact mechanism moved by FHP synchronous motor for Stabilizing output voltage Automatically and manually.

Power & Distribution Transformer

Range of Products

1. Upto 63 MVA 132 kV Class.
2. Special Transformers for Converter and Furnace Applications.
3. Auto Transformers upto 100 MVA 220 kV Class



Star Rated Distribution Transformers



Features:

1. Type: Outdoor Oil Immersed Naturally Cooled
2. Capacity: 16kVA to 200kVA
3. Rated Voltage: 11kV/0.433kV-0.25kV
4. Frequency: 50Hz
5. Insulation Level: 28kV / 95 kVp
6. Conforms to Specification : IS 1180 & IS 2026
7. Lower Losses as compared to conventional Distribution Transformers.

FLP Vacuum Circuit Breaker FLP Transwitch Unit



Rated Voltage : 6.6 KV & 3.3 KV
Rated Current : 400 A .
Rated Short Circuit Current : 13.1 KA



ENGINEERING DIVISION

Engineering Division of the company, is an ISO 9001: 2008 certified Manufacturing Unit located at Kalyani, Nadia, West Bengal. Over 50 years of application knowledge, coupled with the best manufacturing facility, the 'Yule' Centrifugal / Axial Fans, blowers, Environment products are the most High efficiency, economic, reliable and leading brand in the Industry.

'YULE' Industrial Centrifugal Fan & Blower

Application : Utility boilers; West Heat Recovery Boilers ; Ore and Cement processing ; Steel / iron making furnaces ; Sinter Plant (Waste Gas fan) ; Pelletising Plant fans ; API petro -chemical processes ; Pulp and paper processing ;

Types : Laminar bladed ; Aerofoil bladed ; Radial bladed ; Open bladed (paddle type)

Efficiency : upto 90 %

Sizing : Impeller diameter upto 5.0 m

Capacity :

- Flow rate - upto 30, 00,000 m3/hour
- Static pressure - upto 4900 mm WG (48 kPa)
- Temperature - upto 450 C

'YULE' Axial Fan

High efficiency, low cost and low noise operation. Covers wide range of operating zone with fixed and adjustable pitch blades. Easy mounting option with both side flange and double foot stands.

Application : Mine & Tunnel ventilation ; Building Ventilation (HVAC); High Temp smoke extraction ; Trough Fan

Efficiency : upto 82 %

Sizing : Impeller dia : 315, 355, 400, 450, 500, 560, 630, 710, 800, 900, 1000, 1120, 1250, 1400 and 1600 mm

Capacity :

- Flow rate - upto 1, 70,000 m3/hour
- Static pressure - upto 175 mm WG (1.7 kPa)
- Temperature - Ambient ; upto 300 deg C for 2 hours (smoke extraction)



Electrostatic Precipitator

Application : Steel plant ; Power Plant ; Cement Plant ; Other industries ; for Fume Extraction & Cleaning Systems; Gas Conditioning Towers ; De-dusting Systems in Electric Arc Furnaces

Types : Dry type

Efficiency : upto 99.9 %

Sizing : upto 6 fields

Capacity : upto 9,00,000 m3/hr ; temp upto 250 C



Bag Filter

Application : Steel plant ; Cement Plant ; Other industries

Efficiency : upto 99.9 %

Capacity : upto 6,00,000 m3/hr ; temp upto 120 C



Water Pollution Control

Engineering Division has to its credit several such installations working throughout the country.

Application :

- Effluent Treatment Plant (ETP) for Industrial Applications
- Chemical and Process Industries ;
- Sewerage Treatment Plants (STP) for Municipal Applications ; upto 1.2 MLD
- Water Treatment Plants (WTP)

Installations so far, include ETP upto 64 MLD ; STP upto 1.2 MLD and WTP upto 4.5 MGD.



TEA DIVISION



- ▶ The quality value added Tea of Andrew Yule Brand is now available on line at www.andrewyule.com
- ▶ The Tea Division of the Company has Fifteen (15) Quality Tea Estates in Assam, Darjeeling & Dooars. Five (5) of these estates are featuring in top 20 batting order amongst more than 1000 estates of Eastern India.
- ▶ All these quality gardens are HACCP & ISO Certified, while Assam & Darjeeling Gardens are also UTZ, Trustea or Rainforest Alliance Certified. The quality orthodox producing Assam & Darjeeling Estates are also members of ethical Tea partnership.
- ▶ Yule Gardens are consistently showing an increase in land productivity compared to overall productivity of the tea growing areas of the region.
- ▶ Yule Brand Tea is a popular mark in the erstwhile USSR, State of Georgia. The Yule Brand ready to drink ice-tea are available in various popular stores of Georgia. Andrew Yule is also exporting teas to USA, U.K. and Ukraine.



ANDREW YULE & CO. LTD.

Registered Office & Tea Division :

YULE HOUSE, 8 Dr. Rajendra Prasad Sarani, Kolkata - 700001

Telephone : (033) 2242 8210 / 2242 7722 Fax : (033) 2242 9770 / 2242 8353

E-mail : kaustuv.roy@andrewyule.com / ashish.paul@andrewyule.com / debajit.nag@andrewyule.com

Website : www.andrewyule.com

ENGINEERING DIVISION

KALYANI WORKS, Plot A & B, Block-D, Kalyani - 741235, West Bengal

E-mail : gm.engg@andrewyule.com / gm_mkt.engg@andrewyule.com

ELECTRICAL DIVISION

Kolkata Operation :

Switchgear Unit - 14, Mayurbhanj Road, Kolkata - 700023.

Brentford Unit - P-25 Transport Depot Road, Kolkata - 700088.

E-mail : gm.ko.elec@andrewyule.com / mkt.ko.elec@andrewyule.com

Chennai Operation :

T&S Manufacturing Unit - 5/346 Old Mahabalipuram Road, Perungudi, Chennai - 600096.

E-mail : gm.co.elec@andrewyule.com / gnrao@andrewyule.com



Bharat Pumps and Compressors Ltd.

Bharat Pumps and Compressors Ltd. (BPCL) was set up in the year 1970 at Naini, Allahabad as an import substitution unit for manufacture of sophisticated process pumps and compressors for core sector industries which were hitherto being imported by them.



PRODUCT AND SERVICES

The company is engaged in manufacturing and supply of heavy duty Centrifugal Pumps, Reciprocating Pumps, Reciprocating Compressors and High Pressure Seamless Industrial / CNG Gas Cylinders and Cascades to cater the need of Oil Exploration and Exploitation, Refineries, Petro-chemicals, Chemicals and Fertilizers, Power (including Nuclear Power) sectors and other process downstream industries.



BPCL provide services of Erection and Commissioning of its product, after sale services and spares, refurbishment of old equipment supplied.

Product	Range	Application
Centrifugal Pumps	Maximum Power - 2500KW Maximum Pressure - 140Kg/cm ² Maximum Capacity - 10,000M ³ /Hr	<p>BPC offers a wide range of Centrifugal Pumps conforming to latest API 610 edition for Refineries & Petroleum industries and also for Nuclear Power Plants.</p> <p>Pumps are suitable for handling fluids such as Hydrocarbon, Naptha, LPG, Carbamate Solution, Boiler Feed Water, Benefield Solution, Alkaline and Acidic Solution, Ammonia Liquor and Petrochemicals.</p>
Reciprocating Pumps	Maximum Power - 1700HP Maximum Pressure - 421Kg/cm ² Maximum Capacity - 235M ³ /Hr	<p>BPC designs and manufactures custom built Reciprocating Pumps conforming to API 674 latest editions available for wide range of applications.</p> <p>Pumps are suitable for handling Drilling Mud, Cementing Slurry, Crude Oil, Steam Condensate, Heavy Water, Fatty Acids, Ammonia Carbamate, Liquid Ammonia, and Liquid Wax Effluent Water.</p>

Reciprocating Compressors	Maximum Power - 4000KW Maximum Pressure - 450Kg/cm ² Maximum Capacity - 70,000NM ³ /Hr	BPC designs and manufacture custom built Reciprocating Compressors as per API 618 latest edition. Compressors are suitable for handling gases like Air, Nitrogen, Carbon Dioxide, Hydrogen, Hydrocarbons, Ammonia Synthesis Gas, Coal Gas, Natural Gas, LPG etc
High Pressure Industrial Seamless Gas Cylinder	Capacity -up to 46.7 liters of water Filling Pressure - up to 150Kg/cm ²	BPC manufactures High Pressure Industrial Gas Cylinders for storage of Gases like Oxygen, Argon, Hydrogen, Nitrogen, Methane, Helium, Air, Carbon Dioxide, Nitrous Oxide etc.
High Pressure Industrial Seamless Gas Cylinder are manufactured as per Code : IS 7285 (Part I & Part II) 2004 / ISO 9809 Part I.		
CNG on Board Cylinders :	Capacity - 22 to 80 litres of water Filling Pressure - 250Kg/cm ²	BPC manufactures wide range of high quality Seamless steel CNG Cylinders for almost all kinds of vehicle such as three wheelers, cars, buses and various other types of vehicles cylinders.
CNG on Board Cylinders as per Code IS 15490: 2004 / ISO 11439: 2000		
CNG Cascades: IS 7285 Part I	Water Capacity 500 Itrs. To 5,000 Itrs. Of water Filling Pressure up to 250 kg/cm ²	Manufactured as per: IS 7285 Part I. Used in CNG gas filling station for storing of CNG Gas and filling to CNG driven Automobiles
CNG Cascades are manufactured as per code: IS 7285 Part I		





HMT LIMITED

HMT Limited (HMT) was incorporated as "Hindustan Machine Tools Limited" in 1953 for manufacture and supply of machine tools for Indian manufacturing industries. Over the years, the Company successfully diversified into manufacture of Watches, Tractors, Printing Machines, Metal Forming Machines, Die-casting & Plastic Processing Machines, Dairy Machines, CNC Systems, Ball Screws and Bearings by assimilating technology through collaborations with the industry leaders across the world. Consequently, *Hindustan Machine Tools Limited* was renamed as *HMT Limited* in 1978. HMT has established technology leadership by providing reliable solutions to the major strategic sectors of the country through supply of appropriate goods and services thereby *Driving Growth through Technology*.

Pioneering Leadership

Accelerated Engineering Growth in the Country by providing state-of-the-art Machine Tool Technology and has been a major contributor in the development of key sectors of economy including Automobile, Railways, Defence, Agriculture, Power and Consumer Durables.

Pioneered Watch manufacturing in India by setting up India's first watch factory during 1961-62 to manufacture mechanical watches and later expanded the product range to automatic and quartz watches becoming the "*Time-keepers to the Nation*".

Contributed to India's Green Revolution by facilitating farm mechanization through manufacture of rugged tractors suited to Indian conditions.

Contributed to India's White Revolution "Operation Flood" by manufacture of Dairy Machines for processing of milk and dairy products for supply to dairies across the Country.

Contributed to India's Literacy programme through manufacture and supply of offset printing machines and allied machinery.

Nurtured technical & managerial skills in India and abroad by providing industrial training in its well-equipped training centers which has also triggered entrepreneurial development as well as placed HMT trained personnel across the globe.

It can be said that ***Whatever the Industry, there's HMT***

HMT Limited with its corporate headquarters at Bangalore, now manages the Tractors and Dairy Machinery business directly while other businesses are managed through five subsidiaries viz. HMT Machine Tools Limited, HMT Watches Limited, HMT Chinar Watches Limited, HMT Bearings Limited and HMT (International) Limited, the exclusive export arm. HMT has so far supplied more than 100,000 machine tools, 110 million watches and 4,25,000 tractors.

<p>HMT Limited (A Government of India Undertaking) HMT Bhavan, No. 59, Bellary Road, BANGALORE – 560 032 Tel : 91-80-23330333, Fax : 91-80-23339111 E-mail : cho@hmtindia.com Website : www.hmtindia.com</p>	
---	--

HMT Tractors

HMT has been a provider of technology to harness India's green wealth. HMT started manufacture of 25 HP tractors in 1971 in technical collaboration with ZETOR, Czechoslovakia at its plant in Pinjore. Over the years, it further developed the technology for 35hp, 40hp, 49hp, 60hp and 75hp engines through in-house R&D efforts. HMT also supplies standalone engines for Irrigation Pumps and Diesel Generators.

HMT's tractor production plants in India are located at Pinjore and Hyderabad. It has a well-equipped R&D Center duly recognized by the Department of Scientific & Industrial Research, Government of India and an emission testing laboratory for engines.

HMT upgraded its tractor engine technology through a technical collaboration with M/s AVL, Austria in the year 1986 and produces one of the most fuel efficient Tractor Engines in the country. A 75 hp turbocharged engine tractor model has also been developed by in-house R&D. All HMT Tractor models meet the current standards of emission norms.

HMT Tractors come with choice of hydraulic brakes or mechanical brakes, power steering, Cerametallic clutch in higher HP models, direct axle or split axle drive etc. depending on end application.

HMT Tractor Engines and Transmission are being upgraded to new and latest technologies. Engine upgradation has been taken up through M/s ARAI, Pune, while suitable technology partnership from world renowned manufacturers / institution is being explored for Tractor Transmission and Hydraulics.



Dairy Machinery

HMT set up the Dairy Machinery Unit in Aurangabad, a backward district in Marathwada region of Maharashtra, in the year 1980 in Technical Collaboration with M/s. Fortschritt Landmaschinen (FLM) of erstwhile East Germany (GDR) to cater to the large requirement of Dairy Machinery under Operation Flood Project.

The unit extended its products to cater to needs of Food Processing Industries also and was renamed as the "Food Processing machinery Division" in 1984. The major products manufactured by the Unit are dairy machinery, milk/oil separator, continuous butter marking machine, centrifugal pumps, plate heat exchangers, Milk pumps, homogenizers, pasteurizers, chillers/ IPHE etc. apart from turnkey projects, spare and job orders.



BANGALORE



PINJORE



KALAMASSERY



HYDERABAD



AJMER



PRAGA

HMT Machine Tools Ltd is a wholly owned subsidiary of HMT Ltd, a Government of India Public Sector Undertaking under the Department of Heavy Industry, Ministry of Heavy Industries & Public Enterprises incorporated in the year 1953 at Bangalore with the objective of producing a limited range of machine tools. With the success achieved in the initial years in absorbing the technology from global players and in attaining production competence far ahead of the original plans, the Company launched a plan of diversification and expansion by setting up new units at Pinjore, Kalamassery, Hyderabad and Ajmer. HMT Machine Tools Ltd has established a wide marketing network covering all over India to take care of sales and servicing of its products.

The company has imbibed a wide range of technologies and as a result of its diversified strategies it became a truly multi-technology company. HMT Machine Tools Ltd was the first to introduce CNC technology in the country and has been the pioneer of automation solutions in machine tool industry. The Company was instrumental for the growth of the manufacturing sector and strategic sector like defence, railways, aerospace, nuclear power, railways etc in the country, a key economical indicator for the industrial progress of the country. Growth of Indian machine tool industry is synonymous with HMT that has played a vital role in the nation's security needs.

The company has developed, manufactured and supplied high tech, high-end machines of state-of-the-art technology comparable to the best in the world. HMT Machine Tools Ltd was also instrumental in developing machines for defence and strategic sectors which would have otherwise been impossible to import since various developed nations have an embargo on export of critical machines to defence/strategic sectors in other countries.

	Centre Lathe, Heavy Duty Lathe Turning Centre Slant Bed Turning Centre Twin Spindle Chuckler 6 Axes Turning Centre		Gear Cutting Machine Gear Hobber Machine Gear Shaper Machine
	Horizontal Machining Centre Vertical Machining Centre Drilling & Tapping Centre Die & Mould Machining Centre		Special Purpose Machines for various strategic sectors
	Cylindrical Grinding Machine Surface Grinding Machine Centreless Grinding Machine Crankshaft Grinding Machine		Sheetfed Offset Printing Machines Single Colour, Two Colour, Four Colour, Five Colour Programmable Guillotines
	Internal Grinding Machine Tool & Cutter Grinding Machine Double Disc Grinding Machine Rotary Surface Grinder Horizontal Cold Pressure Die-casting Machine Plastic Injection Moulding Machine		Hinumerik Digital control with digital drive HMT NUM control with digital drive

The company manufactures all types of CNC and conventional machines.

Corporate Office :
59, Bellary Road
Bangalore - 560 032
Karnataka, INDIA
Phone: +91-80-2333 0333
Fax : +91-80-2333 7800
E-mail : gmm@hmtmachinetools.com

PRODUCTS AND SERVICES :

HMT Machine Tools Ltd is considered as **ONE-STOP-SHOP** for total manufacturing solutions of its wide range of products for both metal cutting and metal forming machines. In addition to machine tools the Company also manufactures Printing machines, CNC Systems, drives, etc. Some of the critical machines developed and manufactured by HMT for strategic sectors are indicated below :



Directing gear is a computer-controlled rotary system using state-of-the-art technology and is critical to sonar fitted on warships to detect enemy submarines. It is used for supporting and calibrating sonar sensor arrays weighing up to 4.5-tonnes and is designed to withstand harsh environmental conditions such as shock, vibration, temperature and other sea and battle conditions.

Hi-tech 5-axes Machining Centre for producing satellite reflector antenna components. This machine was awarded *DSIR National Award for Excellence in Design*.



Flexible Manufacturing Systems (FMS) for the production of 105 mm armour penetrating shells and for the machining of aluminium engine components for the battle tank. These FMS were engineered by HMT jointly with foreign partners and designed to suit the specific production requirement of the defence unit.

Master-slave mechanical and servo manipulators for hot cell operations in the country's nuclear power & research facilities. The Company has successfully developed these sophisticated and highly precise mechanical and servo devices



Radiation-Shielding Windows (RSW) for hot cell operations facilities for BARC & IGCAR

GM Crankcase Components - 16 Cylinder V-engine cylinder block of mild steel weldment that weighs 5.5 tons and measures 1420 mm (height) x 1380 mm (breadth) x 3730 mm (length).



Five axes CNC machine for winding carbon filament over mandrels (heat sealed material). The wound core shells are used for shielding in strategic & aerospace industries.



INSTRUMENTATION LIMITED

Instrumentation Limited (IL) was set up in 1964 to achieve self-reliance for the country in the field of Process Control & Instrumentation (C&I). IL has its registered Office & HQ at Kota (Rajasthan) and two Manufacturing Units (both accredited with ISO 9001-2008 certification):

- a) **Kota** - for manufacture of Electro-Mechanical Instruments & Components
- b) **Palakkad, Kerala** - for manufacture of Pneumatic/ Mechanical Process Instruments

IL has a good Marketing network with Branch/Regional offices in major metros. Site offices are operative as per Installation & Commissioning requirement of project jobs.

IL's strength lies in providing complete C&I solutions on 'Turn-key' basis - covering Design, Engineering, Manufacturing, Supply, Erection and Commissioning at project sites- to all core key sectors of the nation such as Steel, Power, Defence, Oil & Gas, Petrochemical, Refinery, Fertilizers, Chemicals, Nuclear, etc. IL has been associated with almost all core & strategic projects of the country and takes pride for having supplied:

C&I systems to over 300 Thermal Power Stations and Steel Plants

Digital Control Systems / C&I to almost all major State & Private sector Refineries, Oil & Gas, Petrochemicals and Chemical plants

Instrumentation to most of the Nuclear Power Units

C-DOT designed Telephone Exchanges to more than 300 Telecom Circles of BSNL
Railway Signaling turnkey projects for Railways trunk routes

RPL Dosimeters, discrete components and sub-assemblies to Defence establishments

Clientele of IL comprises of almost all Thermal Power Plants, Steel Plants, Nuclear Power Plants of the country and renowned companies in core Process Industries like BHEL, IOCL, GAIL, BSNL, Indian Railways, NTPC, SAIL, RINL, NPCIL, ONGCL, HPCL, L&T, RIL, GNFC, GSFC, etc, to name a few.

Products & Services

Conventional C&I products manufactured by IL :

- Digital Electronics – DCS, Smart Transmitters, Controllers, etc
- Telecom Products – CDOT MAX NG Exchanges
- Panels & Cabinets – Control Panels, Switch Board Cabinets (SBCs), Local Instrument Enclosures, Local Instrument Racks, Annunciators, etc.
- Railway Signalling Relays, Gas Analyzers
- Defense products- Nose Fuzes, RPL Dosimeters, etc.
- Control Valves(for normal & for High Pressure/High Temperature applications)
- Butterfly Valves, Safety Relief Valves, Power Cylinders, PRDS, related accessories & Flow elements, etc.
- Recently IL added High security Holograms to its manufacturing range

Turnkey IT & EPC Projects offered by IL & New Business Areas :

- **IT Solutions** : Enterprise Resource Planning (ERP), Consultancy/Project Management, E- Tendering, DPR for RGGVY, Bid Process Management for DISCOMs etc.
- **M-Governance Solutions**: Rural Transformation Management System, Work Progress Monitoring System, Anganwadi Management System, Smart Village, etc.
- Household Garbage Sorting & Disposal / Kitchen Garbage collection & disposal Systems.
- Industrial Communications systems and Signalling devices.
- Mobile Jammers

IL KOTA PRODUCT RANGE: www.ilkota.in

DCS/Control Panels



Railway Signalling Relays



Defense components- Nose Fuze



UPS



Telecom Exchanges



Smart Transmitters



Switch Board Cabinets



IL PALAKKAD PRODUCT RANGE: www.ilpgt.com

Control Valves



Safety Relief Valves



Butterfly Valves



Power Cylinders



Actuators, Accessories, Manifold valves, Special Products, etc.





RAJASTHAN ELECTRONICS & INSTRUMENTS LIMITED

JAIPUR

Rajasthan Electronics & Instruments Ltd., Jaipur (REIL) is an ISO 9001:2008 and ISO 14001: 2004 and "Mini-Ratna" Public Sector Enterprise under administrative control of Ministry of Heavy Industries & Public Enterprise, Govt. of India, New Delhi. The Company has a consistent track record of professional management and profitable operations since its inception in year 1981 with sustained growth through product enhancements, cost reductions, larger markets through wider geographical reach, diversifications, absorption of new technologies and corporate governance. The Company has recorded a growth of 68% for the last five years (audited) and has received 'Excellent' MoU performance rating in the past four years from the MoHI&PE.

The Company has state-of-art manufacturing facilities that include assembly line for electronic test and measuring instruments and an Automatic SPV module manufacturing line, at its works in Kanakpura Industrial Area, Jaipur. REIL has ISO 9001 Quality System certifications and ISO 14001:2004 Environmental System Certifications, since 1998 and 2008 respectively. The Company has UL certifications of Crystalline Silicon Terrestrial Photovoltaic (PV) Modules in compliance to international standards.

REIL addresses energy needs of the rural sector through Solar Photo Voltaic, Milk testing and quality related needs of the milk co-operative (Village Milk Co-operatives) and dairy industry sector through its ON/AT line milk analysis and automation solution and Information Technology & Communication applications for e-governance, dairy vertical, small business and Government sectors. **The focus is on Shaping Rural India through Electronics, Renewable Energy & IT Solutions.** Our products particularly impact the sectors of **rural development, women empowerment, energy, power, and rural welfare, and contribute to the social and economic welfare of the rural masses.**

Products & Services

REIL is into manufacturing of **Electronic Milk analysis and collection systems as well as Solar Photo Voltaic Modules/Systems; development and supply of IT Solutions; and power generation through Wind Energy.** The USP of the Company lies in providing onsite services to rural users through a network of 8 Regional Offices and 81 sub-FMCs, deploying over 200 personnel.

In the **Dairy Segment**, the Company has so far deployed more than 1,65,000 Electronic Milk Analysis and automation systems with more than 43 variants, at various **milk plants, milk chilling centers and village co-operative societies throughout the country.** The transparency introduced by the NDDDB at the village cooperative level, - through the use of Electronic Milk Tester and the subsequent variants viz Milk Collection System (MCS) comprising Data Processor and the Electronics weighing system; PC based AMCS; PC based Integrated Milk Management system; Data Processor EMT; DP-EMT and Smart AMCS for spoke-and-hub model at societies; SNF Tester etc. launched by REIL. This has contributed a lot in empowering the rural people and making the Country Proud as **"World's largest milk producer" and retaining its leadership position since 1998.**

In **Renewable Energy Segment**, REIL is into consulting, designing, manufacturing & deploying Solar Photovoltaic solution since 1986. The company has spread its business across the country by deploying more than 2.6 lac SPV solutions with an aggregative capacity of 43 MW, that includes commissioning of **SPV Power plants of various capacities, SPV Street Lighting systems, SPV Dusk Dawn Systems, SPV Lanterns, Wind Hybrid Power Plant, SPV Water pumping Systems and Community Lighting Systems**, covering nearly 1.5 lac villages, benefiting more than 50 lac citizens

In addition to milk analysis REIL has also endeavored to offer solutions for the remaining process in the Dairy vertical and these include RF-ID tags for cattle along with Cattle management software; Veterinary Services Hand Held Terminal (HHT); e-sealing of milk tankers; GPS based vehicle-tracking for tankers; automation of bulk milk reception dock; Integrated Software for Dairy Plant (Dairy-ERP); IVRS applications; Milk Delivery HHT; SMS based query-response systems; web-portal for information systems etc.

Among the major projects implemented by REIL since then are a 5 MW SPV power plant in Jodhpur district, numerous 10 KW to 100 KW Mini SPV power plant, Street Lighting, Domestic Lighting; power packs for communities, villages, schools and primary health centres, water pumping systems, roof top power packs etc.



Under the "Jawaharlal Nehru National Solar Mission (JNNSM)" REIL has successfully executed one of the most ambitious and largest de-centralised Solar Photovoltaic Project of 11 MW by installing 1.12 KW/2.24 KW solar power packs on buildings of Atal Seva Kendras in Rajasthan at 9348 remote locations spread across the area of 3.42 Lac Sq. Kms.



prestigious project from Department of Rural Development, Uttar Pradesh for Solar Power Packs of 120 Wp (LED based) to be installed at Lohiya Awas in 48 districts of Uttar Pradesh. This large size off-grid solar project (5 MW) is aimed to fulfil the energy needs of home segment in UP.



REIL has successfully completed prestigious order from Northern Railway, Jammu for the turnkey project of 1 MWp grid connected rooftop solar power Plant at Shri Mata Vaishno Devi Katra Railway Station, J&K. This Solar Power Plant of 1 MW has been installed on roof shelters of platform and its buildings and will generate 14.6 Lac units in a year which will provide a saving of approx Rs. 1 Crore per year to Railways and will also provide 24 hrs power supply at the station.



Recently REIL came forward with an Innovation-Electronic Milk Adulteration tester (EMAT) to address the global need for identification of

harmful adulteration in milk, which is major concern both for government and the Dairy industry. The equipment is an indigenized solution, high on accuracy and low on cost. The EMAT detect the harmful human adulterants like Urea, Detergent, Liquid Soap, caustic soda, Salt, Soda and Hydrogen Peroxide. This basic model is compatible with existing deployment of above 1,00,000 milk testing solutions already installed.



REIL has also installed Automatic SPV Module Manufacturing Line which is recently inaugurated by Hon'ble Sri Anant G. Geete, Minister of Heavy Industries & Public Enterprises, Government of India in the gracious presence of Hon'ble Shri Gajendra Singh, Minister of Industries, Government of Rajasthan, Shri Vishvajit Sahay, Joint Secretary, Department of Heavy Industry, Smt. Veenu Gupta, MD RIICO & Chairman REIL, Shri A.K. Jain, Managing Director and other eminent personalities.



The Company is working towards vertical integration of its products by development of bought out items required for its final products. This will increase sustainability/production of the Company by reducing dependents on the import. The Company is continuously taking initiatives to facilitate investment, foster innovation, protect intellectual property, and build best-in-class manufacturing infrastructure. REIL has been performing consistently in past 34 years and has plans to do better in coming years.

The products and solutions offered by the company are also exported to overseas market including Nepal, Sri Lanka, Bangladesh, Thailand, Iran, Pakistan, Indonesia, Afghanistan, Germany, France, Denmark, Sweden, Russia, etc. and African counties such as Zambia, Nigeria, Egypt etc for solutions in Dairy as well as Renewable Energy.

The African countries are similar in many ways to the Indian geographies and therefore the products and solutions offered by REIL can contribute in a big way to improve the economies of rural masses while ensuring sustainable development across these countries.

The Company aims to align its objectives and engage itself with the African countries by reaching out to the rural masses through its innovative products/solutions that already has changed the lives of Indian rural masses to the greater extent.



Richardson & Cruddas (1972) Ltd.

Richardson & Cruddas (1972) Ltd., is a heavy engineering Company, engaged in the fabrication of process equipment for the power sector, steel manufacturing plants, railways, oil and gas companies, fertilizer and sugar industries, atomic energy and space companies, as well as water and sewage treatment plants. The company is also engaged in the fabrication, galvanizing & testing of transmission line towers. Company is renting its premises on daily/ monthly basis for office, workshop, cultural events, exhibitions, etc. Its corporate office is at Byculla in Mumbai, and 4 units at Byculla, Mulund, Nagpur & Chennai.

CURRENT OPERATION

BYCULLA

- Rolling of shells upto 110 mm thickness
- Fabrication of Steam Drum, Water Drum, Water Box, Shell & Skirt for Heater
- Rolling of Cylindrical, Conical Shell Plates

MULUND

- Hot Forming of Dished Ends upto 150 mm thickness

NAGPUR

- Design, Fabrication, Galvanizing, Erection of Transmission Towers
- Testing of Transmission Towers upto 400 KV

CHENNAI

- Structural Fabrication and Erection at client premises
- Fabrication of Mud System for BHEL / ONGC
- Sewage / Water Treatment Plants & Township Maintenance
- Environmental Engineering Laboratory services across the country

CLIENTS

- L & T, BHEL, ONGC, SAIL, PGCIL, ICEM, Thermax, MDL, etc.

Corporate Office : Byculla, Mumbai



Dishes Ends Manufactured at Mulund for BHEL Bhopal.



Project: Knock out Drum
Overall Size:-7480mm L x 2440mm W x 2510mm Ht.
Weight:-40.5Tons



MFGD BY
M. S
RICHARDSON & CRUDDAS
KILN SHELL FOR
JK CEMENT
1972 LTD.
MUMBAI
400008



Bellary Supply Sub-Station by R&C Nagpur



MUD System Tank



Horizontal P Heater
Overall Size:-42100mm L x 2510mm W x 2510mm Ht.
Weight:-22.1Tons



Project: Steam Drum
Overall Size:-13900mm Long x 3000mm Wide x 3800mm Ht.
Weight:-52 Tons.



Project: C. C. Boiler
Overall Size:-109 dia. x 9958 mm long
Weight:-70.5Tons



SCOOTERS INDIA LIMITED

SCOOTERS INDIA LIMITED
(A Govt. of India Enterprise)
An ISO 9001: 2008 certified company
P.O. SAROJINI NAGAR
LUCKNOW - 226 008 (U.P.)
INDIA

Tel : +91-522-2476242, 2476031,
Fax : +91-522-2476190
E-mail :
Website :



Incorporated in 1972, Scooters India Limited, A Government of India Enterprise is an ISO 9001:2008 certified Company, situated at 16 Km mile stone, South-west of Lucknow, the capital of Uttar Pradesh on NH No 25 and is well connected by road, rail and air.

It is a totally integrated automobile plant, engaged in designing, developing, manufacturing and marketing a broad spectrum of conventional and non-conventional fuel driven 3-wheelers.

Company's plant owes its origin to M/s. Innocenti of Italy from which it bought over the plant and machinery, design, documentation, copyright etc. The company also possesses the world right of the trade name LAMBRETTA / LAMBRO.

In 1975, company started its commercial production of Scooters under the brand name of Vijai Super for domestic market and Lambretta for overseas market. It added one more wheel to its product range and introduced three wheelers under the brand name of VIKRAM/LAMBRO. However, in 1997, strategically, the company discontinued its two-wheeler production and concentrated only on manufacturing and marketing of 3 wheelers. The company also has design and manufacturing capability for electric three wheelers, however in view of market constraints the company has discontinued its production.

The three wheelers have become more relevant in the present socio-economic environment as it transports goods and passengers at least cost. The company presently manufactures three wheeler vehicles in diesel, CNG and petrol versions and markets these under the brand name Vikram 750D, Vikram 450D, Vikram 1000 CG, Vikram 1500 CG.

The company has its own marketing network of Regional Sales Offices all over India, catering to customer's requirements in the areas of sales and services.

Scooters India Limited makes various & versatile types of three wheelers: Vikram 750D, Vikram 450D, Vikram 1000 CG, Vikram 1500 CG.

The products have a high payload capacity and efficiency. These are specially designed and developed for local transportation. However, the generation of Vikram run successfully in different countries also. Our product is very demanding in various countries all over the world. Germany, Italy, Sudan, Nigeria, Nepal, Bangladesh are few of the countries. For product details click on the product options.

A premiere product from the family of "Vikram" vehicles. It is sturdy, highly fuel efficient, easily maintainable and meets latest emission norms. It is highly cost effective and being used as bread earner for many families.

PRODUCTS & SERVICES

Scooters India Limited manufactures markets various & versatile types of three wheelers: Vikram 750D, Vikram450D, Vikram 1000 CG, Vikram 1500 CG. The company has its own marketing network of Regional Sales Offices all over India, catering to customer's requirements in the areas of sales and services. The specification and Product details are briefly given below :

Specification	Products – Vikram Three-Wheeler Vehicles			
	Vikram 750D	Vikram 450D	Vikram1000 CG	Vikram 1500 CG
Type of vehicle	Diesel Three Wheeler	Diesel Three Wheeler	CNG Three Wheeler	CNG Three Wheeler
Engine	4 Stroke, Single Cylinder Diesel Engine ; Air Cooled	4 Stroke, Single Cylinder Diesel Engine ; Air Cooled	4 Stroke, Single Cylinder Bi-fuel CNG water cooled Engine	4 Stroke, Single Cylinder Bi-fuel CNG water cooled Engine
Fuel	Diesel	Diesel	CNG (Bi-fuel)	CNG (Bi-fuel)
Displacement	510cc	436cc	395 cc	510cc
Bore	85mm	86mm	86 mm	85mm
Stroke	90mm	75mm	68 mm	90mm
Maximum Power	7.5KW @ 3000 rpm	5.52KW @ 3600 rpm	6.7 kw @ 3600 rpm (CNG), 7.8 kw @ 3600 rpm (petrol)	7.4 kw @ 2700 rpm (CNG), 9.5kw @ 2700 rpm (petrol)
Maximum Torque	27Nm @ 1800-2400 rpm	18 Nm @ 2200-2400 rpm	26.2 Nm (CNG), 25 Nm (Petrol) @ 1800-2400 rpm	30 Nm (CNG), 37 Nm (Petrol) @ 1800-2400 rpm
Compression Ratio	17.5 : 1	19 : 1	9:1	9:1
G.V.W	1250 kg	990 kg	990 kg	1250 kg
Kerb Wt.	558 kg for Passenger Carrier, 535 Kg for Goods Carrier, 415 Kg for DAC	450 (D+3P) & 470 kg (D+4P) for Passenger and 450 Kg for Goods Carrier, 340 Kg for DAC	470 kg (Passenger Vehicle), 531 kg (Goods Carrier), 386 kg (DAC)	660 kg for Passenger Carrier, 635 Kg for Goods Carrier, 465 Kg for DAC
Wheel Track	1316 mm	1168 mm	1168 mm	1316 mm
Wheel Base	2270 mm	1950 mm	1950 mm	2270 mm
Ground Clearance	140 mm	140 mm	140 mm	140 mm
Tyre Size	4.5 x 10", 8 ply	4.5 x 10", 8 ply	4.5 x 10", 8 ply	4.5 x 10", 8 ply
Steering	Steering Wheel	Steering Wheel and Handle Bar	Handle Bar	Steering Wheel
Brakes	Hydraulic brakes for simultaneous action on all 3 wheels and Mechanical Brakes on rear wheels also	Hydraulic brakes for simultaneous action on all 3 wheels and Mechanical Brakes on rear wheels also	Hydraulic brakes for simultaneous action on all 3 wheels and Mechanical Brakes on rear wheels also	Hydraulic brakes for simultaneous action on all 3 wheels and Mechanical Brakes on rear wheels also
Suspension	Front coil spring with hydraulic damper. Rear leaf spring with hydraulic damper.	Front coil spring with hydraulic damper. Rear leaf spring with hydraulic damper.	Front coil spring with hydraulic damper. Rear leaf spring with hydraulic damper.	Front coil spring with hydraulic damper. Rear leaf spring with hydraulic damper.
Gear Box	Constant mesh type; Four forward and one reverse gear.	Constant mesh type; Four forward and one reverse gear.	Constant mesh type; Four forward and one reverse gear.	Constant mesh type; Four forward and one reverse gear.
Clutch	Dry	Wet Type	Wet Type	Dry
Starting	Electric Start	Electric Start	Electric Start	Electric Start
Maximum Speed	52 Km / Hour	48±3 Km / Hour	48±3 Km / Hour	52 Km / Hour
Fuel Tank Capacity	10 Ltr	10 Ltr	45 / 30 liter water capacity & 3 Liter (Petrol)	45 liter water capacity & 3 Liter (Petrol)
Seating Capacity	Passenger Carrier-Driver (D)+6 Passenger (P), D+5P, D+7P Goods Carrier - D+1P	Passenger Carrier -(D+3P) and (D+4P) Goods Carrier- (D+1P)	Passenger Carrier -(D+3P), Goods Carrier- (D+1P)	Passenger Carrier-Driver (D)+6 Passenger (P), D+5P, D+7P Goods Carrier - D+1P



CEMENT CORPORATION OF INDIA LIMITED

Cement Corporation of India Limited (CCI) was established in the year 1965 as a wholly owned Government of India Enterprise with the principal objective of achieving self-sufficiency in cement production. CCI was the first cement company to establish cement plants in remote localities all over the country. Over the years, it established 11 cement plants spread across the length and breadth of the country and with 42.48 lakh MT capacity and an authorized capital of Rs.900 crore. CCI was the first cement manufacturer which brought latest dry process precalcinator technology in India in 1980s.

Presently, CCI is operating only three Units namely Tandur (Telengana), Bokajan (Assam) and Rajban (Himachal Pradesh) having manufacturing capacity of 14.46 lakh MT per annum. CCI has closed seven Units during 1996 to 1998 having capacity of 28.02 lakh MT due to uneconomic operations.

All the three Operating Plants at Tandur, Rajban and Bokajan are accredited with ISO 9001:2008 certification.

In recognition of the achievements made by the Company, the Corporation was conferred with prestigious **Turnaround CPSE Award 2010** by Hon'ble BRPSE conferred on 10th March, 2011.

CCI was also conferred with the prestigious **SCOPE Award for Excellence and Outstanding Contribution to the Public Sector Management – Special Institutional (Turnaround) Category – 2010-11** announced on 7th November, 2012.

On implementation of the second phase of the Sanctioned Scheme, the Company will further be able to improve upon its operational efficiency, turnover and profitability on sustained basis.

Despite the down turn in the economy of the country specifically in the infrastructure wherein cement is prime material and considered in the core sector, the Company could sustain its profitability since 2006 onwards and the same is continuing till date. In addition, CCI is looking to venture further into following areas of its core competency:

- i) Mining Operations and documentation;
- ii) Utilisation of non-operating assets through Joint Ventures;
- iii) Marketing and distribution of cement in various parts of the country; and
- iv) Installation of new clinker capacities including Grinding Units.

PRODUCT & SERVICES OFFERED :

CCI offers quality products from its various plants located in different parts of the country :

No	Type of Cement	Grade	Specification	Brand Name
1.	Ordinary Portland Cement (OPC)	33	IS : 269-89	Poorna Shakti
2.	Ordinary Portland Cement (OPC)	43	IS : 8112	Maha Shakti
3.	Ordinary Portland Cement (OPC)	53	IS : 12269	Param Shakti
4.	Portland Pozzolana Cement (PPC)		IS : 1489	Jal Shakti
5.	Ordinary Portland Cement (OPC) (For Railway Sleepers)	53-S	IS : 12269	Param Shakti

In addition to this, CCI can also offer special cements like Sulphate resistant cement and low alkali cement on specific requirement.

The products offered by CCI is best among the leading producers in that area and enjoy consumer preference.

The products of CCI are available in the States of Haryana, Himachal Pradesh, Uttarakhand in North India, Assam, Manipur and Nagaland in North East and Telengana, Karanataka and Maharashtra in South India.

MANUFACTURING FACILITIES :



TANDUR CEMENT PLANT

P.O. CCI TANDUR,
DISTT. K.V. RANGAREDDY,
TELENGANA. PIN – 501 158.
Phone No : 08411-247223,
FAX : 01704-247243
E-Mail :

PRODUCTS :

1. OPC 43 Grade (For general use)
2. OPC 53 Grade (For multi-storey construction)
3. OPC 53-S Grade (For Railway Sleepers)



RAJBAN CEMENT PLANT

P.O. RAJBAN, DISTT. SIRMAUR,
HIMACHAL PRADESH. PIN-173025
PHONE : 01704-222249/266221.
FAX : 01704-266270
E-mail :

PRODUCTS :

1. OPC 43 Grade (For general use)
2. PPC (For general use)



BOKAJAN CEMENT PLANT

P.O. BOKAJAN, DISTT : KARBI ANGLONG,
ASSAM. PIN: 782 490
PHONE : 03675-246106.
FAX : 03675 -246107
E-mail : bokajan@cementcorporation.co.in

PRODUCTS :

1. OPC 33 Grade (For general use)
2. OPC 43 Grade (For general use)



HINDUSTAN PAPER CORPORATION LIMITED.

Hindustan Paper Corporation Limited was setup to accomplish the task of developing the industrially backward regions for balanced socio-economic growth and to bridge the gap between demand and supply of cultural varieties of paper in the decade of 70's-80's. Today it is one of the largest manufacturers of paper and newsprint in South East Asia. Simultaneously HPC has been playing a dominant role in the socio-economic development of the North-East Region.



HPC At A Glance

- Incorporated on May 29, 1970
- Installed capacity of 3,00,000 TPA in 3 operating mills.
- Units
 - > Nagaon Paper Mill (NPM) - 1,00,000 TPA Jagiroad, Distt- Morigaon, Assam Operational since October, 1985
 - > Cachar Paper Mill (CPM) - 1,00,000 TPA Panchgram, Distt.- Hailakandi, Assam Operational since April, 1988

Subsidiaries :

- Hindustan Newsprint Ltd. (HNL) - 1,00,000 TPA, Newsprint Nagar, Distt. Kottayam, Kerala Operational since November, 1982
 - Nagaland Pulp & Paper Co. Ltd. (NPPC) - 33,000 TPA Tuli, Distt. Mokokchung, Nagaland Operational since July, 1982 for a decade; Non-operational since Oct, 1992
- NPPC is under revival with a target to resume Commercial production in December' 2016.

A Crusader For Literacy

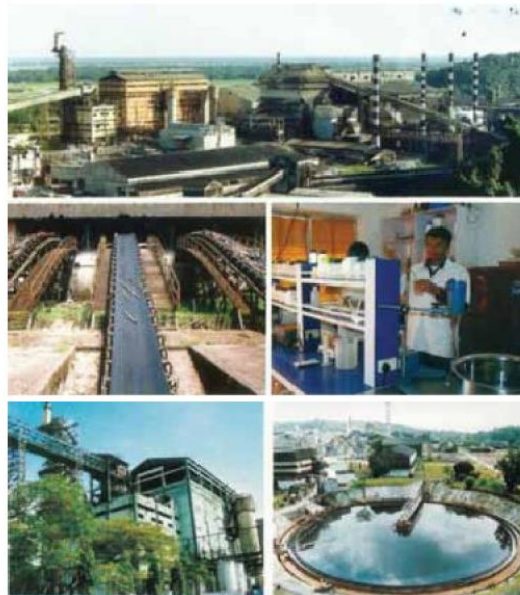
HPC is an extended arm of the Union Government to intensify the movement for literacy through the growth of the paper industry.

Truly world-class

HNL produces exceptional quality newsprint for the Indian and International market, which is comparable with the best in the global market. The company has an installed capacity of 1,00,000 MT per annum for producing 49 & 45 GSM newsprint. HNL, with its state-of-the-art technology, has emerged as a company that is truly contemporary, and today, caters to the requirement of all major News Dailies in the country.

HPC Products

SI No.	HPC Products	GSM Range
1	Cream Wove	45 - 90
2	Surface Sized Maplitho	58 - 120
3	Computer Stationery Deluxe Paper	58 - 80
4	Copier Paper	75 - 80
5	White Offset Printing	60 - 75
6	Newsprint	45 & 49
7	Duplicating (Full Size)	60 - 63
8	White Cover	110 - 130
9	Caustic Lye	.Concentration - 48 - 50%



Corporate Office :
75-C, Park Street, Near Park Plaza Building,
Kolkata, West Bengal 700016
Phone : 033 2229 6902



Hindustan Salts Limited

Hindustan Salts Limited (HSL) was incorporated on 12th of April, 1958 under the Companies Act, 1956 as a company fully owned by Government of India with an objective to take over the salt sources at Sambhar, Didwana and Kharaghoda earlier managed by the Salt Department, Government of India. This is the only Central Government Public Sector undertaking engaged in the manufacture of salt. The Company started its business in January 1959. . Later on in 1964 Sambhar Salt Limited was incorporated as joint Venture of Central government through HSL and Government of Rajasthan to take over the Salt Works of Sambhar Lake under V T Krishnamachari Award in the ratio of 60:40. SSL has 58000 acre in Rajasthan.

The Company has major salt production works at Kharaghoda in Distt. Surendranagar in Gujarat and also coming up with one lakh TPA Salt Refinery. The company also undertakes dry mining of rock salt at Drang salt mines in Mandi in Himachal Pradesh which is used as animal lick. There are proven Rock Salt deposits of approximately 116 million tonnes. Company propose to set up a Solution Mining Project and Vaccum Salt Plant of 300000 TPA. Company has one supply depot at Ramnagar in Uttrankhand. The company is specialised in production of high quality edible salt for human consumption and for industrial usage. Besides Common Salt, Liquid Bromine is also produced at Kharaghoda having installed capacity of 900 TPA. Bromine is mainly used for Pesticides, Pharmaceuticals, fire extinguishers, dyes and other bromo-compounds. The company is also venturing into production of Magnesium chloride at the Kharaghoda unit very soon. SSL has one salt refinery at Gudha. SSL will come up with a new Salt Refinery of 2 lakh TPA capacity at Nawa in near future.

Both the companies have recently diversified the business on many counts and considerable infrastructure has been added to produce various varieties of high quality value added salt to cater market demand. The companies can process and sell any type and quantity of salt.

Products & Services

Sambhar Salts Ltd.	Kyar Salt :	It is hard bold crystal variety. Due to its high purity levels it is extremely suitable for the Chlor-Alkali Industry. In the edible category it has virtually monopolised its usage in the manufacture of black salt. This salt is also extensively used in storing ice
	Reshta Salt :	The wind movement over the surface of Kyar Salt Pans regularly sprays water on their margins where salt dries out in the form of a fine white powder and steadily accumulates. This salt is chemically at par with kyar salt but since it is powdery in nature, it has high solubility and is, therefore, ideal for the purpose of water softening in Thermal Power Stations.
	Pan Salt :	This variety is primarily used for edible purposes. It is granular and relatively more white in appearance than Kyar and Reshta Salt.
	Refined Salt :	The company is manufacturing iodised refined salt in 1 kg. consumer poly pack under BIS license.
	Double Fortified Salt :	Iron fortified salt has been extensively tested and its effectiveness in improving iron status and reducing the prevalence of anaemia.

Salt produced at Sambhar Lake is of low Calcium and Magnesium contents thus have low hardness as compared to Marine Salt. Salt with low hardness is one of the desirable requirements of industries.

Apart from the above the Company is also manufacturing High Purity salt in bulk packing. This product is of I.P. grade and is for pharmaceutical Industries

SSL produce Natural Salt that has been in the making by Mother Nature. Widely acknowledged as amongst the best Natural Salts, Sambhar Salt has been mentioned in our ancient scriptures and Susruta, the Father of Indian Medicine, had classified the salt produced from Sambhar Lake in Rajasthan as ROMAKA OR SAKAMBARI and this is used in Ayurvedic medications. Sambhar Natural Salt has large number of minerals to fortify your nutrients requirement, helping build a stronger immunity and healthier body.

Hindustan Salts Limited	Kharaghoda	Kurkutch Salt	This is a small crystal variety relatively more white in appearance. It has a ready market for human consumption in all parts of the country and is normally marketed after rough crushing. It is the basic raw material for a salt refinery.
		Baragara Salt	This is a bold crystal variety consumed extensively for edible purposes in U.P., tribal areas of M.P. and the Terrai region.
		Liquid Bromine	Bromine is extracted from this mother liquor using a steaming out process through a stripping tower made of glass. The purity is even higher than ISI standards.
	Mandi	Rock Salt	The product is chunks of rock salt mined by dry mining method. It is used as a natural cattle lick by live stock owners within 300-400 KM radius of the mines.





HOOGLHY PRINTING COMPANY LIMITED

An old and trusted name in the printing industry, particularly in the Eastern India. Not just a name, over the years, Hooghly Printing Co. Ltd. (HPC) has become an Institution of repute, of excellence, and of professional competence.

The Organisation

Located in the heart of the city of Kolkata, HPC came into being as far back as in 1922 when the printing industry in the Eastern States of India was not developed as it is today.

The Organisation is now a wholly owned subsidiary of Andrew Yule & Co. Ltd (A Govt. Of India Enterprise), under the administrative control of the Ministry of Heavy Industries, Govt. of India.

The Job

Hooghly Printing is fully equipped to handle all kinds of printing assignments. While printing text books for different states is the forte, the Company also undertakes commercial jobs such as Newsletters, leaflets, calendars etc.

The other most important area of business is printing confidential jobs such as Question papers, Answer scripts for Boards & Universities.

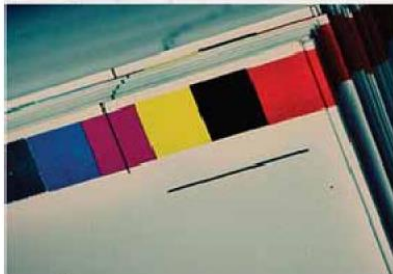
Infrastructure

The latest acquisition for our print shop is a state of the art, Heidelberg 4 colour printing machine which will further increase productivity, enhance quality of printing, expand the range of our services and meet a large variety of customers' needs. Apart from that the company has two 2 colour and one 4 colour sheet fed press.

The Company has three 4 colour web offset presses and automatic perfect binders.

Certification

The Company is certified with ISO 9001-2008.



41, Chowringhee Road, Kolkata-700 071

Phone : 033-2288 3312 / 3779

Fax : 033-2288 2734

E-mail : hooghlyprint.dataone.in / partha.majumdar@hooghlyprinting.com

Website : hooghlyprinting.com



NEPA LIMITED

- Name : **NEPA LIMITED**
Nepa Nagar, Burhanpur dist
Madhya Pradesh
Pin : 450221
TEL : +91 -7325 -222134
FAX : +91-7325-222174
Email : secretarycmd@nepamills.nic.in
gmpw@nepamills.nic.in
- Installed capacity : 88,000 TPA
- Products : Newsprint (Writing & Printing from 2016)
- Market Share : 4-5%
- Newsprint production commenced on 26 April, 1956 with forest based wood as raw material
- In March, 1997 switched over to **recycled waste paper** as raw material

Products & Services :

Globally Nepa Can Serve/Assist in the Following Areas.....

- Export Newsprint (42 & 44 gsm) and Writing & Printing (56 to 80 gsm) paper grades at competitive rates
- Consultancy for setting up a wood based or recycle based medium sized integrated paper mill
- Trouble shooting to improve the process efficiency in existing paper mills
- Township management including housing, plumbing, electrical, medical, schooling and other related infrastructure





Paper Machine

Paper Machine



Paper Rolls in Finishing House

Effluent Treatment Plant





HMT (International) Limited

HMT (International) Ltd, is a wholly owned subsidiary of HMT Ltd, a Government of India Enterprise under the Department of Heavy Industry, Ministry of Heavy Industries & Public Enterprises was established in 1974 primarily for export of HMT products and later diversified to take up Projects & Services abroad. HMT(I) is a multi-technology engineering complex, synonymous with technological excellence in India through development of an array of manufacturing solutions and products. This formidable strength of invaluable technical expertise accumulated over the years, has helped industrial revolution in India. HMT(I) markets its product range through a global network. Today HMT(I) boasts off a large and diverse clientele base in more than 70 countries. HMT(I), an ISO 9001-2008 company has been classified as "Mini-Ratna" by Government of India.



HMT(International) Ltd has come to be recognized as a reliable source for project expertise in a spectrum of engineering fields offering optimum solutions to meet the client's needs covering manufacturing , maintenance and training. HMT(I) synergizes this project management competence to cover diverse areas such as fruit processing and Information Technology.

Besides offering it's expertise in projects, HMT(I) also offers Technical and Management Consultancy services. HMT(I)'s comprehensive package of project consultancy, technical & engineering services from 'CONCEPT TO COMMISSIONING' on a turnkey basis includes :

- ❖ Market Research and Product survey
- ❖ Complete Package Solutions (Demand Survey, Production, Pricing, Marketing strategies)
- ❖ Project Identification & Formulation
- ❖ Project Profiles, Pre- Feasibility Reports
- ❖ Feasibility Reports/Techno-Economic Surveys
- ❖ Detailed Project Reports
- ❖ Replacement, Modernization & Value Engineering
- ❖ Project Evaluation Studies
- ❖ Project Engineering Services
- ❖ Technology transfers & Collaboration Services
- ❖ Supply, Installation of Plant & Machinery
- ❖ Training & Rendering Expert Services
- ❖ Turnkey Project Engineering & Implementation
- ❖ Machine Tool Re-Engineering Services

Products and Services :

- ❖ Manufacturing solutions – CNC and general purpose conventional machines for metal cutting and forming, die casting machines etc.
- ❖ Printing Machines: Offset printing presses in wide ranges in 1, 2 and 4 colour units matching global standards.
- ❖ Food processing machinery and dairy equipment.
- ❖ Reconditioning and retrofitting of machine tools
- ❖ Tractors in wide range and farm equipments
- ❖ Watches- Hand wound, Automatic and quartz
- ❖ Presses
- ❖ Engineering components – Bearings, Ball screws etc.

Projects & Services :

HMT(I) has successfully implemented various engineering projects in Kenya, Tanzania, Zambia, Nigeria, Senegal, Algeria, Mauritius, UAE, Bahrain, Maldives, Malaysia, Indonesia, Zimbabwe, Afghanistan, Turkmenistan, Tajikistan, Kyrgyzstan, Myanmar, Sri Lanka etc.

In addition HMT(I) had set up many Tool Rooms, Common Facility Centers, Engineering Workshops, Industrial Training Centers, Vocational Training Centers, Entrepreneur Technical Development Centers, Information Technology as well as provided Technical services to many countries in Asia and Africa on commercial terms under global competition. HMT(I) also supplied various types of sports goods and computers & other peripherals to Government of Maldives and Government of Republic of Benin respectively under assistance from Gol.




HMT (International) Limited
An ISO 9001-2008 Company

HMT (International) Limited

(A Wholly Owned Subsidiary of HMT Limited)
HMT Bhavan, # 59, Bellary Road, Bangalore 560 032, India
Ph : + 91 80 2333 9060
Email : contactus@hmti.co.in
Website : www.hmti.com





Braithwaite Burn & Jessop Construction Co. Limited

The Braithwaite Burn & Jessop Construction Co. Limited (BBJ) was incorporated in 1935 for construction of first Howrah Bridge (Rabindra Setu) at Kolkata. BBJ became a Govt. company w.e.f. 13th. August 1987. BBJ at present amalgamated with Bharat Bhari Udyog Nigam Limited, w.e.f. 10.07.2015. BBJ is a profit making company with high positive network.

BBJ has constructed numerous major steel bridges for Indian Railways e.g. Bramhaputra Bridge in Assam, Mahanadi Bridge in Odisha, Ganga Bridge at Mokemah in Bihar, Krishna Bridge in Andhra Pradesh and many more. The major achievement of BBJ came in 1992 when BBJ successfully completed construction of The Second Hooghly Bridge (Vidyasagar Setu) at Kolkata, the first long span cable stayed bridge of India. Presently BBJ is constructing one of the largest Rail cum road bridge over river Ganga at Munger, Bihar. Apart from building the bridges BBJ has successfully executed construction of many commercial and administrative buildings e.g. Reserve Bank of India at Kolkata, University of Kolkata, Indian Statistical Institute, Telephone exchange building, Multistoried buildings for Govt. of West Bengal, Allahabad Bank and many more. BBJ also successfully executed various marine works like Fishing jetty, Fish Landing Centres, Dredging works, Water Intake jetty etc. BBJ also constructed six bridges for Delhi Metro and Bridge over Andheri station in Mumbai for Mumbai Metro.

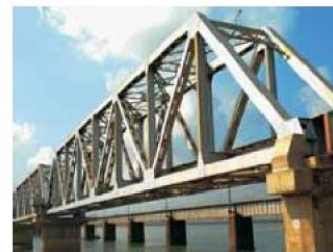
Major Achievements in Recent Years

Supply, fabrication and erection of Double track Rail steel girder bridge at Andheri, Mumbai over existing railway track.



Supply, fabrication and erection of six nos. Metro rail steel bridges for Delhi Metro over Road flyover.

Supply, fabrication and erection of 2.1 Km long steel Railway bridge over river Mahanadi at Odisha.



Supply, fabrication and erection of 720 M long steel Rail bridge over river Gandak at Bihar.

Supply, fabrication and erection of 3.7 KM long steel superstructure with concrete deck Rail cum Road bridge over river Ganga at Munger, Bihar (Advance stage of completion).



Construction of Multistoried office buildings including Basement for West Bengal Govt. & Bank.

Construction of Market complexes & Food Parks for Fisheries Department, Govt. of West Bengal.



Piling & substructure works for Metro Rail Projects.

BBJ Can Offer

- **Design, Supply, Fabrication & Erection of Long Span Steel Bridges**
 - (a) Cable Stayed Bridges
 - (b) Truss Girder Bridges
 - (c) Plate Girder Bridges
 - (d) Steel – Concrete composite Girder Bridges
- **Civil Design, Survey & Construction for**
 - (a) Pile Foundation
 - (b) Composite Bridges
 - (c) Multistoried Buildings
 - (d) Marine Structures
 - (e) RCC Bridges
 - (f) Viaduct
 - (g) Other civil engineering works including marine works.



BRIDGE & ROOF CO. (I) LTD.

Bridge and Roof Co. (I) Ltd. (B&R), a Miniratna Category-I Company, is a one source multi-disciplinary construction and engineering enterprise under Department of Heavy Industry, Ministry of Heavy Industries and Public Enterprises, Government of India.

Established in 1920, B&R has grown into a premier organisation in the country, serving almost all the major Project Implementation Authorities in the country both in Public and Private Sectors. B&R has a pan India presence with project locations are all over the country and abroad. The Head Quarters of the company is at Kolkata, West Bengal.

The Company owns a fleet of modern construction equipment and has unique human resource of highly qualified and experienced manpower. B&R is committed towards on-time completion of projects through effective Project Management, maintaining highest quality standards.



*Construction of Gas Holder at
IISCO, Burnpur*



*Erection of Two Coke Drums of 575 MT at DCU, CPCL,
Chennai Site by Main crane 1250 MT capacity and
tailing crane 550 MT*

Business Operations :

B&R a versatile Construction Company having presence all over India has two Strategic Business units viz. Project Division and Howrah Works. The workshop at Howrah, West Bengal is engaged in manufacturing Railway Wagons, Bailey Type Unit Bridges, Bunk Houses, Bridge Girders and heavy steel structures.



*Construction of Bailey Type Unit Bridge at various locations
for Government of Odisha*



*BOXN-HL Type SS Railway Wagon manufactured
at Howrah Workshop*

Projects

B&R provides services for various types of Civil, Mechanical, Turnkey and Highway Projects including Depository Work in various sectors such as Hydrocarbon, Power, Ferrous & Non-Ferrous, Chemical & Fertilizer, Cement, Infrastructure Development, Highways, Environmental Projects etc.



Computer Centre at NIT Agartala

Civil

- Area Grading
- Piling, Soil Densification
- Buildings
- Industrial Buildings
- Stadiums and Sports Complex
- Chimneys, Prilling Towers, Silos
- Concrete Bridges & Flyovers
- Airport Terminals
- Ports and Jetties



Product Storage Tanks with connecting pipeline at IOCL Kandla

Mechanical

- Piping
- Equipment Erection
- Storage Tanks
- Heaters and Reformers
- Stainless Steel Silo
- Structural Steel Work
- Boiler
- Flare Stack, Steel Chimney
- Steel Bridge



Turnkey Construction of 3 Nos. Non-IFP Heater at IOCL Panipat

EPC / Turnkey Projects

- Oil Terminals and Depots
- Group Gathering Station
- Cross Country Piping
- Environmental Projects
- Fire Fighting / Protection System
- Heaters and Reformers



Hetauda-Birgunj Road over 56 KM for Govt. of Nepal

Road and Highways

- New Highways
- Widening & Strengthening
- In-Plant Roads



CDU / VDU Revamp at CPCL Manali

Plant Turnaround & Inspection Jobs

- Shut-down / Maintenance jobs in
- Steel Plant
- Refinery
- Petrochemical
- Oil & Gas

Regd. Office : Kankaria Centre, (5th Floor), 2/1 Russel Street, Kolkata-700071
<http://www.bridgeroof.co.in>



Engineering Projects (India) Limited

Engineering Projects (India) Limited (EPI), a Government of India Enterprise, under the administrative control of Ministry of Heavy Industries & Public Enterprises, is a cohesive body of professionals, having vast experience of undertaking turnkey projects in India and abroad, and enjoys high credibility on this account. It is a premier Central Public Sector Enterprise and operates in a highly competitive "consultancy and construction Industry". The Company has been a pioneer in the field of turnkey project management and project exports. EPI is one of the first few Construction and Contracting Companies in India to get Certification for ISO 9001:2008 (Quality Management System) and ISO 14001:2004 Certification (Environmental Management System) which covers all area of operation of EPI & reflects its concern for environmental issues. EPI has also got Certification for Occupational Health & Safety Management System OHSAS 18001:2007 implementation at the Corporate Office.



STEEL PLANT



DAM



RAILWAY WORKSHOP



TRANSMISSION LINES



SUPER SPECIALITY HOSPITALS



MASS HOUSING PROJECT

PRODUCTS & SERVICES

The services rendered by the Company include the specialized activities such as :

- Feasibility Studies,
- Detailed Project Reports,
- Design & Engineering,
- Supply of Plant & Equipment,
- Quality Assurance,
- Civil & Structural Works,
- Erection, Testing, Trial-runs & Commissioning,
- Overall Project Management.



» EXPERTISE

During its 45 years of existence, EPI has acquired expertise in the areas like-

- Civil & Structural Work
- Super Speciality Hospitals
- Milk Processing Plants
- Border Management Projects
- Water Supply, Environment & Pollution Control System
- Material Handling System
- Dams & Irrigation Works
- Oil & Petrochemicals, Metallurgical Projects
- Industrial & Process Plants
- Highways & Airports projects
- Mass Housing & Townships
- Transmission Lines / Substations etc.



WATER TREATMENT & ALLIED WORKS



AIRPORT



MILK PROCESSING PLANTS



MONO-RAIL

» Multi-Modal Transportation Systems

EPI has signed an MOU with M/s Scomi International Bhd. of Malaysia to undertake Monorail Projects in India and abroad.

M/s Scomi is engaged in setting up Mass Rapid Transportation Systems and provides technical know-how, technology, supply, assembly, testing and commissioning, signaling and control systems, operation and maintenance of Monorail projects.

Core-3, Scope Complex, Lodhi Road
New Delhi - 110003, India
Tel : +91-11-24361666, Fax : +91-11-24363426
E-mail : epico@epi.gov.in
Website : www.epi.gov.in

GOVERNMENT OF INDIA
MINISTRY OF HEAVY INDUSTRIES & PUBLIC ENTERPRISES
DEPARTMENT OF HEAVY INDUSTRY,
UDYOG BHAWAN, NEW DELHI 110011
Website: www.dhi.nic.in
E-mail: shioff@nic.in