

6 Welfare of SC/ST/OBC/ PWDs and Minorities



6.1 This Department is highly conscious regarding obligations of Central Public Sector Enterprises to promote the welfare of minorities in the light of Government's directive on this subject. Instructions issued by the Government in respect of reservation in appointment/promotion for SC/ST/OBC, handicapped persons and minority communities are followed by CPSEs under the Department.

6.2 An SC/ST Cell has been functioning under the supervision of a Liaison Officer of the rank of Director/Deputy Secretary for proper monitoring of the implementation of the reservation policy of Government of India. This Cell is also responsible for conducting annual inspection of reservation rosters of the CPSEs. The work force in the CPSEs consists of a large number of persons from different minority communities as well. Their integration into the mainstream workforce is emphasized in all CPSEs and there is no discrimination on account of their caste, creed

or religious belief. Facilities like residential accommodation etc. are extended to all employees on equal terms..

6.3 Every year, Qaumi Ekta/Sadbhavana Diwas is organized where people from all sections of the society, including women and children, participate to adopt and spread the spirit of oneness, national integration and harmony.

6.4 All operating CPSEs under this Department have been advised to comply with the provisions of the "Persons with Disabilities" (Equal opportunities, Protection of Rights and Full Participation) Act, 1995. Many of the CPSEs under the Department of Heavy Industry are sick/incurred losses, resulting in very limited recruitment in the last few years. Nevertheless, CPSEs follow these instructions whenever recruitment is made.

6.5 Efforts are made by the CPSEs to follow the instructions issued by the Government from time to time to promote the welfare of persons with disabilities. Persons with disabilities are provided facilities like special conveyance allowance, ground floor residential accommodation, exemption from payment of professional tax, to and fro transportation facilities, provision of medical equipments and general medical assistance. The visually handicapped persons are provided Braille symbols and are engaged in running telephone booths, repair of cane chairs etc. Special Schools are being run for mentally challenged children & visually handicapped persons. These facilities are being provided to enable them to discharge their duties and facilitate their integration into the mainstream workforce.



Tricycle Distribution to Handicapped Person at BHEL, Bhopal

7 Empowerment/ Welfare of Women



7.1 Department of Heavy Industry and the CPSEs under its administrative control constantly endeavours to ensure that there is no discrimination against women on any count. All members of the staff are made conscious of the principles of gender mainstreaming and gender justice enshrined in the Constitution of India.

7.2 In order to create awareness regarding human rights, especially of female employees, in

accordance with the directions issued by the Government for the preservation and enforcement of rights to gender equality and justice to working women employees, a Complaints Committee has been constituted in the Department for redressal of complaints related to sexual harassment of women. Department actively encourages women employees to freely participate in all activities like meetings, seminars, competitions, training etc. This helps in ensuring their fuller integration into the mainstream work force.





- 8.1** Vigilance activity is an essential requirement of any organization. The Department has a Chief Vigilance Officer of the rank of Joint Secretary to look into the complaints against employees of the Department as well as Board Level Officers of the Central Public Sector Enterprises and Organisations under its administrative control. He is assisted by a Director and one Under Secretary along with a Vigilance Section.
- 8.2** The main areas of work of the Vigilance Section are:
- ◆ Dealing with complaints against Board level appointees of CPSEs as well as the officers of the Department of Heavy Industry;
 - ◆ Issue of vigilance clearance in respect of Board level appointees in CPSEs and all other appointments based on PESB recommendation, requiring ACC approval;
 - ◆ Liaisoning with CVC, CBI and CVOs of CPSEs under DHI to streamline the flow of information in respect of vigilance matters;
 - ◆ Tendering advice on issues of financial and procedural irregularity;
 - ◆ Vetting charge sheet in respect of charges against Board level appointees.
- 8.3** The vigilance organization also lays emphasis on preventive vigilance and is promoting the use of IT to bring about greater transparency.
- Punitive measures are also taken in appropriate cases and scrupulously followed up wherever required.
- 8.4** Vigilance Section is responsible for monitoring & completion of Annual Confidential Reports of officers and staff of the Department and of the Board level appointees of CPSEs under the administrative control of this Department, besides monitoring the submission of Annual Property Returns by the officers and staff of the Department of Heavy Industry as well as Board level Officers of CPSEs under the Department of Heavy Industry.
- 8.5** The Annual Meet of Chief Vigilance Officers of Central Public Sector Enterprises under the Department of Heavy Industry was held on 13th July 2010, at Udyog Bhavan, New Delhi, under the chairmanship of Secretary DHI, to facilitate interaction between the Ministry and the CVOs as well as to review the vigilance activities in the CPSEs with a view to improving the overall vigilance administration.
- 8.6** Beside the periodical review of Vigilance matters at the level of Secretary and Joint Secretary & CVO, Vigilance Awareness Week was observed by DHI from 25th October to 1st November, 2010 to generate and spread awareness against corruption.

9 Progressive Use Of Hindi

- 9.1.** Hindi Section of the Department of Heavy Industry takes up measures to promote the use of Official Language in the Department. The efforts to promote the use of Hindi in official works of the Department continued during the year 2010-11. The Official Language Implementation Committee holds its periodical meetings regularly to review the progress made in use of Hindi and suggestions to remove the impediments in the implementation of the provisions of the Official Language Act, 1963, and the rules made there under.
- 9.2.** During the period, the Committee of Parliament on Official Language inspected the offices of (i) Bharat Heavy Electricals Ltd., Power Sector Headquarters, New Delhi (ii) Bharat Heavy Electricals Ltd., ROD, Mumbai (iii) Bharat Heavy Electricals Ltd., Power Sector-ER, Kolkata and (iv) Cement Corporation of India Ltd. Headquarter and has expressed satisfaction with the status of progress in the use of Hindi. During the year 2010-11, the officers of the Department carried out inspection of different Units/Offices to monitor the progress made in the use of Hindi and the officers of these Units/Offices so visited were directed to achieve the targets prescribed in the annual programme.
- 9.3.** All the Notifications, Resolutions, Notes and Circulars, Parliament Questions, Annual Report, Budget Performance, General Orders and papers laid on the Tables of both Houses of the Parliament were issued both in Hindi and English. All the letters received in Hindi were responded to in Hindi. In order to promote the use of Hindi and to increase correspondence in Hindi “Hindi Fortnight” was organized from 1st September, 2010 to 15th September, 2010



Meeting of Committee of Parliament on Official Language on 1st June, 2010.

during which several competitions including Speech, Translation from English to Hindi and vice-versa, General Hindi Knowledge, Noting & Drafting, Hindi Poem Recitation etc. were also conducted. Staff of the Department participated in these activities with keen interest. Awards were given to meritorious candidates by Hon'ble Minister of State (Heavy Industries and Public Enterprises). Workshops were also organised for officers/employees. Besides, the programme of learning Hindi through “AAJ KA SHABD” and AAJ KA VICHAR” is being implemented actively. An E- Patrika has also been launched on intranet of the Department. It contains articles and poems as well as information on departmental activities.

- 9.4.** Public Sector Undertakings, under the administrative control of this Department, also continued to make vigorous efforts to implement the Official Language Act and its provisions. Various Seminars, Competitions and Workshops were organised in these CPSUs to propagate the use of Hindi. “HINDI FORTNIGHT/HINDI WEEK/HINDI MONTH” were celebrated in these CPSEs with great zeal.

Allocation of Business to the Department of Heavy Industry

INFORMATION IN RESPECT OF ADMINISTRATION SECTION

Department of Heavy Industry was earlier one of the Departments of Ministry of Industry. With effect from 15th October, 1999, a separate Ministry viz. Ministry of Heavy Industries & Public Enterprises has been created. The Ministry comprises of the Department of Heavy Industry and Department of Public Enterprises. The Department of Heavy Industry is looking after the following items of work:

A Work relating to following PSEs:

1. Heavy Engineering Corporation Limited
2. Engineering Projects (India) Limited
3. Bharat Heavy Electricals Limited

Subsidiary

1. Bharat Heavy Plate and Vessels Limited

4. HMT Limited

Subsidiaries

1. HMT (Bearing) Limited
2. HMT International Limited
3. HMT (Machine Tools) Limited
4. HMT (Watches) Limited
5. HMT (Chinar Watches) Limited
5. Scooters India Limited
6. Andrew Yule and Company Limited
7. Cement Corporation of India Limited
8. Hindustan Cables Limited
9. Hindustan Paper Corporation Limited
Subsidiaries
 1. Nagaland Pulp and Paper Company Limited
 2. Hindustan Newsprint Limited
 3. Jagdishpur Paper Mills Limited
10. Hindustan Photo Films Manufacturing Company Limited
11. Hindustan Salts Limited and its subsidiary - Sambhar Salts Limited
12. Instrumentation Limited and its subsidiary. Rajasthan Electronics and Instruments Limited

13. NEPA Limited
14. Tyre Corporation of India Limited
15. Bharat Bhari Udyog Nigam Limited

Susidiary

1. Braithwaite, Burn & Jessop Construction Limited Two subsidiaries of BBUNL, viz.,
2. Braithwaite and Company Limited and
3. Burn Standard Company Limited have been transferred to Ministry of Railways and Ministry of Steel during this year on 6.8.2010 and 15.9.2010 respectively

16. Triveni Structural Limited
17. Tungabhadra Steel Products Limited
18. Bharat Pumps and Compressors Limited
19. Richardson and Crudas (1972) Limited
20. Bridge and Roof Company (India) Limited

PSEs / Subsidiaries of PSEs under liquidation / winding up / closure / transfer to other Departments / Organisations :

1. Bharat Ophthalmic Glass Limited
2. Bharat Leather Corporation Limited
3. Tannery and Footwear Corporation of India Limited
4. Rehabilitation Industries Corporation
5. Bharat Yantra Nigam Limited
6. National Bicycle Corporation of India Limited
7. National Industrial Development Corporation Limited
8. National Instruments Limited
9. Mining and Allied Machinery Corporation Limited
10. Cycle Corporation of India Limited
11. Jessop and Company Limited
12. Lagan Jute Machinery Company Limited
13. Reyrolle Burn Limited
14. Weighbird (India) Limited

15. Bharat Brakes and Valves Limited
16. Bharat Process and Mechanical Engineers Limited
17. Bharat Wagon and Engineering Company Limited

B. OTHER SUBJECTS

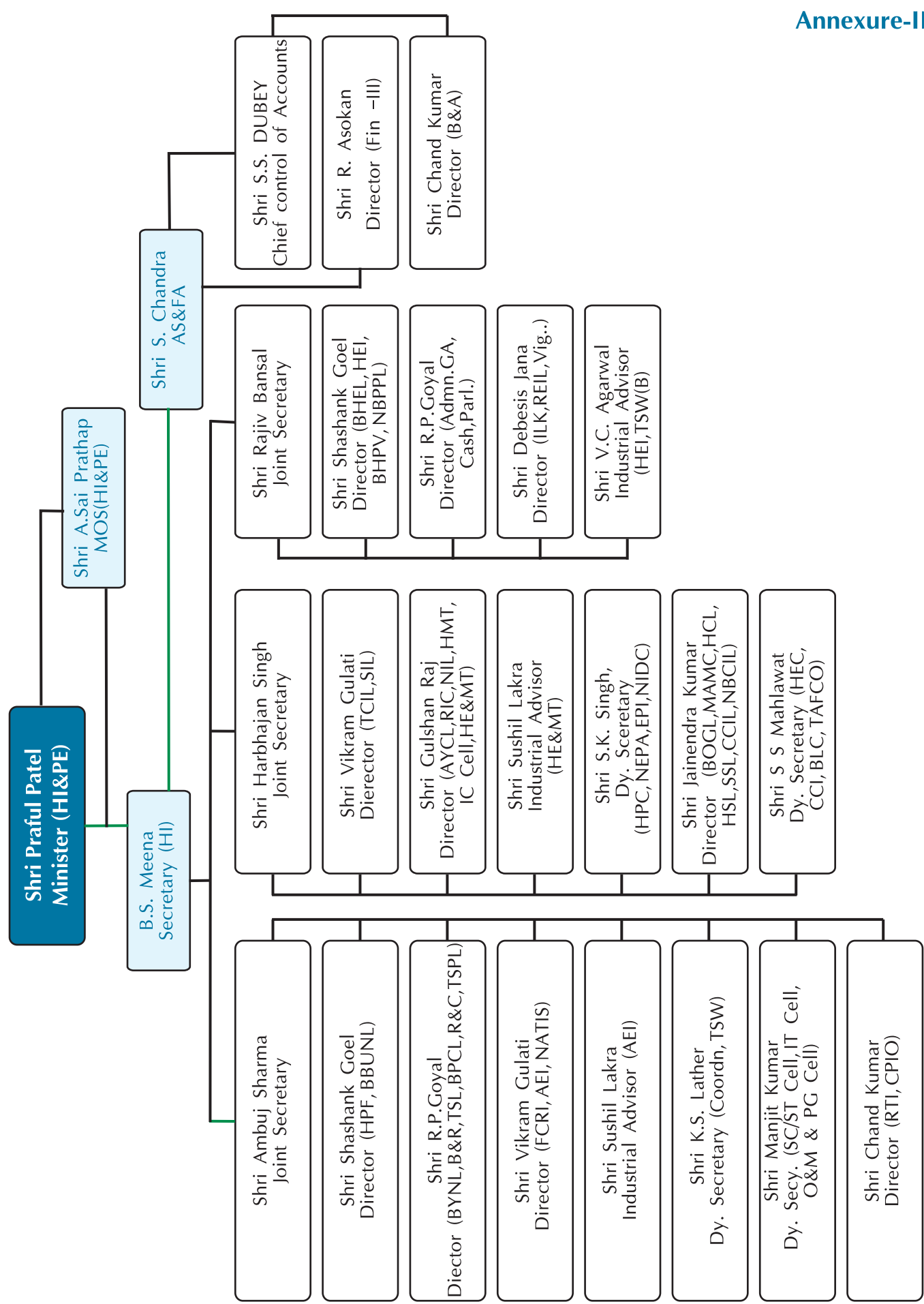
1. Manufacture of Heavy Engineering Equipment for all industries.
2. Heavy Electrical Engineering Industries.
3. Machinery Industries including Machine Tools and Steel Plant Equipment Manufacturing.
4. Auto Industries, including tractors and earth moving equipment.
5. All diesel engines including automobile engines.
6. Development Council for Automobile and Allied Industries.
7. Development Council for Machine Tools.
8. Development Council for Automobile and Allied Industries.
9. Development Council for Textile machinery Industry.
10. The Automotive Research Association of India.
11. ARAI-Forging Industry Division.
12. Fluid Control Research Institute.
13. National Automotive Testing and Research and Development Infrastructure Project Implementation Society (NATIS).

2. The Department of Heavy Industry is headed by a Secretary to the Government of India who is assisted by a team of officers and staff of overall sanctioned strength of 276. The Department is also supported by an Integrated Finance Wing headed by Additional Secretary and Financial Adviser. An organization chart of the Department of Heavy Industry is attached.
3. In addition to above, the Department has appointed / designated various Nodal Officers, at senior level, for smooth functioning of the Department, as well as for helping its staff and

the public. Some of such areas have been described below:-

- (i) In an effort to streamline the system of redressal of public grievances, a Joint Secretary in this Department is functioning as Joint Secretary (Public Grievances).
 - (ii) In order to impart information sought under RTI Act, 2005 to the public, a Joint Secretary and a Deputy Secretary have been appointed as Appellate Authority and Central Public Information Officer (CPIO) for this Department.
 - (iii) In an effort to augment computerization/e-governance in the Department, a Joint Secretary in this Department has been designated as IT Manager, who will also be responsible for updating the website of the Department periodically.
 - (iv) In order to deal with the litigation matters and to further co-ordinate, a Joint Secretary in the Department has been designated as Nodal Officer to ensure that timely action is taken in the matter.
 - (v) In order to preserve the important records emanating from the Department and to co-ordinate in related matters, a Joint Secretary in this Department has been designated as the Chief Records Officer
 - (vi) In order to create adequate awareness regarding human rights, especially of female employees, Department of Heavy Industry, in accordance with the directions issued by the Government for the preservation and enforcement of rights to gender equality and justice to working women employees, a Complaints Committee has been constituted in this Department for the redressal of complaints related to sexual harassment of women.
4. Further, this Department actively encourages women employees to freely participate in all activities like meetings, seminars, competitions and training etc. This helps in ensuring their integration into the mainstream work force.

ORGANOGRAM OF DEPARTMENT OF HEAVY INDUSTRY (As on 28-02-2011)



GENERAL INFORMATION ABOUT CPSEs UNDER DHI

(₹ in Crore)

Sl.No.	Name of CPSE and location of Registered Office	Year of setting up of CPSE	Gross Block as on 31.3.2010 (₹ in crore)
1	Andrew Yule & Co.Ltd.,(AY&CL),Kolkata	1979	232.36
2	Hooghly Printing Co. Ltd.,Kolkata	1979	4.81
3	Bharat Heavy Electricals Ltd.,(BHEL),New Delhi	1956	8110.00
4	Bharat Heavy Plate & Vessels Ltd.,(BHPV),Vishakhapatnam	1966	81.21
5	Bharat Bhari Nigam Ltd.,Kolkata	1986	0.77
6	Braithwaite,Burn & Jessop Construction Co.Ltd.,(BBJ),Kolkata	1987	12.58
7	Bharat Pumps & Compressors Ltd.,(BPCL) Allahabad	1970	51.38
8	Richardson & Cruddas (1972) Ltd.,(R&C) Mumbai	1972	31.44
9	Triveni Structural Ltd.,(TSL) Allahabad	1965	19.64
10	Tunghabhadra Steel Products Ltd.,(TSPL) Hospet,Karnataka	1967	20.87
11	Bridge and Roof Co.(India) Ltd.,(B&R) Kolkata	1972	181.37
12	Hindustan Cables Ltd.,(HCL) Kolkata	1952	525.45
13	Heavy Engineering Corpn.Ltd.,(HEC) Ranchi	1958	338.8
14	HMT Ltd.,(Holdg Co.) Bangalore	1953	136.39
15	HMT (Machine Tools) Ltd.,Bangalore	2000	313.29
16	HMT (Watches) Ltd,Bangalore	2000	190.06
17	HMT (Chinar Watches) Ltd.,Jammu	2000	12.16
18	HMT (Bearings) Ltd. Hyderabad	1981	30.23
19	HMT(International) Ltd.,Bangalore	1974	7.29
20	Instrumentation Ltd,(IL) Kota	1964	70.54
21	Rajasthan Electronics & Instruments Ltd.,(REIL) Jai pur	1981	19.30
22	Scooters India Ltd.,(SIL) Lucknow	1972	55.94
23	Cement Corpn.of India Ltd. (CCI) New Delhi	1965	665.75
24	Hindustan Paper Corporation Ltd. (HPC) Kolkata	1970	948.72
25	Hindustan Newsprint Ltd.,(HNL) Vellore,Kottayam	1983	406.32
26	Hindustan Photo Films Mfg. Co. Ltd. (HPF) Ooty	1960	716.00
27	Hindustan Salts Ltd.,(HSL) Jai pur	1959	9.87
28	Sambhar Salts Ltd.,(SSL) Jai pur	1964	12.34
29	Nepa Ltd.,(NEPA) Neapanagar	1958	105.39
30	Tyre Corpn.of India Ltd.,(TCIL) Kolkata	1984	119.45
31	Engineering Projects (India) Ltd.,(EPI) New Delhi	1970	16.39
	TOTAL:		13446.11

Note: (i) 13 CPSEs namely, BPME, WIL, BBVL, TAFCO, CCIL, BLC, NBCIL, MAMC, NIDC, BOGL, RIC & BYNL have been closed and one CPSE (NPPC) is not in operation).

(ii) Braithwaite and BSCL have been transferred to Ministry of Railways/Ministry of Steel during August/September, 2010.

Employment Position including SC, ST & OBC as on 31.3.2010 in CPSEs under DHI.

Sl.No.	Name of PSE	TOTAL NO. OF EMPLOYEES				Number of Employees		
		Executives	Supervisors	Workmen/ Others	Total	SC	ST	OBC
1	2	3	4	5	6	7	8	9
1.	AYCL	201	102	14805	15108	2551	3240	7481
2.	Hooghly Ptg	8	7	45	60	2		
3.	BHEL	11685	9037	25552	46274	9097	2547	8233
4.	BHPV	241	45	882	1168	188	103	243
5.	BBUNL	19	6	7	32	2		7
6.	BBJ	49		49	98	6	1	3
7.	BPCL	201	67	809	1077	170	3	342
8.	R&C	18	15	27	60	7	0	6
9.	TSL	27	7	102	136	21	0	58
10.	TSP	10	15	76	101	26	3	28
11.	B&R	738	0	793	1531	178	6	56
12.	HCL	327	362	1700	2389	584	212	176
13.	HEC	1401	269	1200	2870	326	594	710
14.	HMT (Hldg Co.)	274	147	1667	2088	484	92	26
15.	HMT (MT)	1045	171	2592	3808	695	195	938
16.	HMT (Watches)	221	168	1587	1976	354	90	
17.	HMT (Chinar Watches)	6	11	128	145	12	2	0
18.	HMT (Bearings)	26	21	177	224	35	0	94
19.	HMT (International)	49	5	7	61	11	4	
20.	IL	238	682	441	1361	222	60	212
21.	REIL	69	66	82	217	42	7	45
22.	SIL	210	58	937	1205	265	3	324
23.	CCI	117	174	746	1037	132	103	112
24.	HPC	531	206	1945	2682	270	214	154
25.	HNL	191	86	701	978	68	5	220
26.	HPF	90	238	956	1284	122	43	358
27.	HSL	7	31	69	107	13	6	14
28.	SSL	10	24	70	104	24	10	30
29.	NEPA	159		1144	1303	109	74	
30.	TCIL	32	12	145	189	19		
31.	EPIL	325	91	19	435	78	21	44
	TOTAL	18525	12123	59460	90108	16113	7638	19914

Note: (i) 13 CPSEs namely, BPME, WIL, BBVL, TAFCO, CCIL, BLC, NBCIL, MAMC, NIDC, BOGL, RIC & BYNL have been closed and one CPSE (NPPC) is not in operation).

(ii) Braithwaite and BSCL have been transferred to Ministry of Railways/Ministry of Steel during August/September, 2010.

PRODUCTION PERFORMANCE OF CPSEs UNDER DHI

(₹ in crore)

Sl.No.	Name of PSE	2007-08 (Actual)	2008-09 (Actual)	2009-10 (Actual)	2010-11 (Anticipated)	2011-12 (Target)
1	2	4	5	6	7	8
1.	AYCL	169.82	182.65	188.78	261.97	302.92
2.	Hooghly Printing	4.12	6.57	9.33	11.20	12.00
3.	BHEL	21401.00	28033.00	34154.00	38000.00	43000.00
4.	BHPV	180.30	84.39	104.31	231.00	380.00
5.	BBUNL	8.64	5.00	3.45	16.36	19.84
6.	BBJ	87.72	68.11	82.56	130.00	156.70
7.	BPCL	191.77	239.99	281.94	250.00	385.00
8.	R&C	76.78	81.37	91.70	95.00	100.00
9.	TSL	5.99	4.30	3.13	6.00	5.00
10.	TSP	2.54	1.38	2.63	4.00	7.00
11.	B&R	710.63	935.10	1162.01	1250.00	1400.00
12.	HCL	2.00	0.97	0.00	0.00	0.00
13.	HEC	382.86	419.47	509.64	677.76	904.18
14.	HMT(Holding Co.)	177.72	134.34	169.65	223.84	314.00
15.	HMT(MT)	233.69	188.12	194.19	200.00	230.00
16.	HMT(Watches)	18.99	15.35	11.42	15.00	26.00
17.	HMT(Chinar Watches)	2.35	0.65	0.30	0.50	1.00
18.	HMT(Bearings)	13.08	7.17	5.62	13.90	20.00
19.	HMT(International)	25.14	16.36	30.80	33.00	45.00
20.	IL	246.81	253.09	327.94	367.00	405.00
21.	REIL	81.51	88.44	100.70	114.00	200.00
22.	SIL	151.72	126.48	148.76	195.25	226.01
23.	CCI	342.63	363.89	361.73	365.47	380.89
24.	HPC	774.06	677.31	618.73	671.79	775.02
25.	HNL	298.50	340.51	241.98	344.10	366.30
26.	HPF	17.62	24.10	26.25	77.84	85.00
27.	HSL	12.56	27.29	19.66	13.70	17.01
28.	SSL	15.00	15.88	11.45	17.82	24.60
29.	NEPA	102.96	104.38	51.71	114.63	122.85
30.	TCIL	224.29	128.37	34.82	278.68	293.55
31.	EPIL	851.05	958.71	1062.00	1240.00	1400.00
	Total	26813.85	33532.74	40011.19	45219.81	51604.87

- Note:** (i) 13 CPSEs namely, BPME, WIL, BBVL, TAFCO, CCIL, BLC, NBCIL, MAMC, NIDC, BOGL, RIC & BYNL have been closed and one CPSE (NPPC) is not in operation.
- (ii) Braithwaite and BSCL have been transferred to Ministry of Railways /Ministry of Steel during August/September, 2010.

PROFIT(+) LOSS (-) (BEFORE TAX) OF CPSEs UNDER DHI.

(₹. in crore)

Sl.No.	Name of PSE	2007-08 (Actual)	2008-09 (Actual)	2009-10 (Actual)	2010-11 (Anticipated)	2011-12 (Target)
1	2	4	5	6	7	8
(A)	PROFIT MAKING PSEs					
1	AYCL	8.61	31.76	75.49	1.83	10.05
2	Hooghly Printing	0.05	0.07	0.24	0.25	0.27
3	BHEL	4430.00	4849.00	6591.00	7544.00	8951.00
4	BPCL	30.50	26.88	31.09	20.85	53.37
5	B&R	11.27	33.26	64.11	45.00	56.00
6	BBUNL	0.29	0.21	0.54	0.01	0.02
7	BBJ	1.84	2.86	3.33	2.52	3.78
8	CCI	41.26	52.91	52.75	27.29	504.81
9	EPIL	20.13	25.66	27.43	31.50	33.50
10	HEC	4.17	18.37	26.93	32.78	65.07
11	HNL	18.10	21.10	-53	6.54	12.64
12	HMT(Hldg. Co.)	40.48	-45.97	-52.91	38.12	58.68
13	HMT(Machine Tools)	-40.50	-37.17	-45.80	41.00	32.00
14	HMT(International)	1.02	1.26	3.96	4.45	7.00
15	SSL	0.77	1.6	0.02	0.06	0.27
16	IL	-32.91	-68.37	333.62	9.75	10.75
17	REIL	4.06	1.49	2.00	3.95	7.50
	Sub-total for (A) Profit making Companies	4539.14	4914.92	7060.80	7809.90	9806.71
(B)	LOSS MAKING PSEs					
18	TSP	-20.45	-18.44	-25.77	-27.75	-29.25
19	BHPV	-56.05	96.35	-8.60	-25.66	-11.96
20	R&C	-59.60	-30.30	-27.38	-25.00	-20.00
21	TSL	-50.80	-46.98	-56.22	-53.95	-57.95
22	HCL	-434.98	-445.35	-459.32	-526.53	-593.00
23	HPC	136.74	60.73	-96.56	-78.86	-21.65
24	HMT(Bearings)	-18.43	-10.68	-15.31	-14.66	-10.01
25	HMT(Watches))	-195.66	-146.95	168.35	-258.00	-238.00
26	HMT(Chinar Watches)	-49.02	-69.47	49.94	-41.00	-38.00
27	HPF	-789.49	-890.26	-1009.22	-1127.00	-1289.00
28	HSL	0.04	0.66	0.03	-0.57	0.32
29	SIL	-22.47	-27.65	-28.01	-14.10	-17.94
30	NEPA	-37.34	-40.88	-57.87	-57.82	-67.64
31	TCIL	-49.20	-7.37	-14.67	-7.98	-7.34
	Sub-total (B) Loss making Companies.	-1646.71	-1576.59	-1580.61	-2258.88	-2401.42
	GRAND TOTAL(A&B)	2892.43	3338.33	5480.19	5551.02	7405.29

- Note:** (i) 13 CPSEs namely, BPME, WIL, BBVL, TAFCO, CCIL, BLC, NBCIL, MAMC, NIDC, BOGL, RIC & BYNL have been closed and one CPSE (NPPC) is not in operation).
- (ii) Braithwaite and BSCL have been transferred to Ministry of Railways /Ministry of Steel during August/September, 2010.

SALARY/WAGE BILL & SOCIAL OVERHEADS AS % OF TURNOVER OF CPSEs UNDER DHI

Sl.No.	Name of PSE	Wages and salaries as % of Turnover						Social overheads as % of Turnover					
		2007-08 (Actual)	2008-09 (Actual)	2009-10 (Actual)	2010-11 (Anticipated)	2011-12 (Target)	2007-08 (Actual)	2008-09 (Actual)	2009-10 (Actual)	2010-11 (Anticipated)	2011-12 (Target)		
1	2	3	4	5	6	7	8	9	10	11	12		
1	AYCL	31.82	29.35	38.90	25.73	23.78	9.77	9.13	9.85	6.52	6.02		
2	Hoogly Ptg.	29.21	19.96	16.28	14.95	14.93	2.16	1.74	0.99	0.91	0.92		
3	BHEL	14.70	14.67	15.09	14.16	13.72	1.86	1.98	1.69	1.84	1.96		
4	BHPV	18.32	73.71	42.13	20.18	14.95	6.00	7.00	8.66	6.00	5.00		
5	BBUNL	13.40	24.60	31.50	9.50	8.30	1.10	1.80	2.10	0.61	0.50		
6	BBJ	9.90	10.90	9.60	9.10	9.00	0.50	0.50	0.50	0.60	0.50		
7	BPCL	15.18	18.93	15.11	20.46	15.48	0.79	0.85	0.8	1.08	0.82		
8	R&C	2.00	2.00	2.00	2.00	2.00	0.002	0.002	0.002	0.002	0.002		
9	TSL	140.00	88.00	123.00	123.00	16.00	16.00	10.00	10.00	16.00	14.00		
10	TSP	44.34	177.90	113.72	63.00	38.57	19.32	44.84	33.40	23.75	17.15		
11	B&R	6.27	6.58	5.69	5.71	5.34	1.16	2.03	1.21	1.01	0.95		
12	HCL	2090.04	N.A.	N.A.	N.A.	N.A.	139.93	N.A.	N.A.	N.A.	N.A.		
13	HEC	17.50	22.40	22.70	18.20	15.80	-0.90	-0.10	1.70	1.50	1.40		
14	HMT(Hldg)	38.44	40.03	35.60	29.30	22.20	3.80	4.20	3.80	3.20	2.40		
15	HMT(MT)	55.01	68.78	64.02	36.03	29.02							
16	HMT(Watches)	308.12	323.29	444.72	231.27	200.00	1.65	1.70	1.95	1.80	1.70		
17	HMT(Chinar)	0.30	0.31	0.46									
18	HMT(B)	50.97	103.35	115.00	43.00	18.00	6.63	7.70	6.01	2.30	1.46		
19	HMT(I)	7.96	12.65	10.32	9.72	6.51	1.56	2.45	12.85	13.77	11.61		
20	IL	16.44	17.41	18.74	16.35	13.58	0.76	0.86	0.98	0.82	0.68		
21	REIL	8.87	12.24	15.43	11.84	7.50	1.45	1.56	1.05	1.32	1.00		
22	SIL	24.14	25.55	29.33	17.63	14.00	2.20	2.40	2.18	1.33	1.05		
23	CCI	8.19	11.27	10.50	8.86	8.90	3.68	5.66	3.38	3.51	3.58		
24	HPC	10.28	13.39	20.25	15.32	13.09	3.63	6.27	10.83	7.81	6.75		
25	HNL	9.92	15.58	13.96	13.74	13.65	4.98	4.10	7.46	4.58	3.76		
26	HPF	94.06	47.86	49.33	18.78	17.85	3.96	3.67	7.14	2.72	2.46		
27	HSL	25.10	12.27	20.59	32.06	26.98	1.81	0.51	1.14	2.08	1.81		
28	SSL	27.31	30.21	58.34	35.58	27.45	2.10	1.51	4.16	2.68	2.24		
29	NEPA	15.00	18.00	27.00	18.00	20.00	3.00	4.00	6.00	2.00	2.00		
30	TCIL	12.93	21.11	110.69	15.11	14.31	2.75	3.42	10.88	2.82	2.67		
31	EPIL	3.26	3.08	3.30	3.08	3.01	0.61	0.97	0.57	0.80	0.80		

Note: (i) 13 CPSEs namely, BPME, WIL, BBVL, TAFCO, CCIL, BLC, NBCIL, MAMC, NIIDC, BOGL, RIC & BYNL have been closed and one CPSE (NPPC) is not in operation.

(ii) Braithwaite and BSCL have been transferred to Ministry of Railways /Ministry of Steel during August/Septembr,2010.

ORDER BOOK POSITION OF CPSEs under DHI

(₹. in crore)

Sl.No.	PSE	As on 1.10.2006	As on 1.10.2007	As on 1.10.2008	As on 1.10.2009	As on 1.10.2010
1	2	3	4	5	6	7
1.	AYCL	68.51	62.28	69.10	39.98	49.43
2.	Hooghy Ptg	1.27	0.90	1.50	0.75	6.72
3.	BHEL	37500.00	55000.00	85200.00	117000.00	144000.00
4.	BHPV	348.57	262.17	144.83	211.38	471.95
5.	BBUNL	36.01	48.24	14.99	159.63	183.97
6.	BBJ	126.35	144.49	59.48	958.35	841.86
7.	BPCL	136.20	232.87	346.55	241.63	111.64
8.	R&C	60.00	64.00	74.00	103.00	94.00
9.	TSL	8.29	10.86	11.52	5.71	4.46
10.	TSP	3.02	1.86	0.17	0.19	2.28
11.	B&R	994.79	1381.00	1958.63	1995.97	1704.29
12.	HCL	5.80	3.25	4.18	3.40	0.06
13.	HEC	522.10	606.28	1910.80	2076.90	2161.11
14.	HMT(Hldg)					
15.	HMT(MT)	196.77	181.55	187.55	151.80	160.48
16.	HMT(Watches)					
17.	HMT(Chinar watches)					
18.	HMT(Bearing)	2.50	2.23	3.87	3.30	7.27
19.	HMT(I)	35.81	18.51	16.06	10.69	7.95
20.	IL	158.00	170.00	248.84	335.00	380.55
21.	REIL	20.23	44.52	27.25	36.15	64.25
22.	SIL*					
23.	CCI	20.48	26.80	24.36	21.46	16.38
24.	HPC	8.26	119.06	213.76	144.28	134.31
25.	HNL					
26.	HPF	1.46	2.75	2.50	5.00	2.00
27.	HSL	15.00	14.52	17.88	17.63	11.11
28.	SSL	6.51	2.48	4.96	0.50	1.03
29.	NEPA	78.73	64.69	110.39	60.39	63.71
30.	TCIL	3.60	4.10	0.00	0.72	3.63
31.	EPIL	1225.54	1957.57	2131.26	4451.7	4434.20
	TOTAL	41583.8	60426.98	92784.43	128035.51	

***Goods are produced for stock & sale**

- Note:** (i) 13 CPSEs namely, BPME, WIL, BBVL, TAFCO, CCIL, BLC, NBCIL, MAMC, NIDC, BOGL, RIC & BYNL have been closed and one CPSE (NPPC) is not in operation.
- (ii) Braithwaite and BSCL have been transferred to Ministry of Railways/Ministry of Steel during August/Septembr,2010

EXPORT PERFORMANCE OF CPSEs UNDER DHI

(₹. in crore)

Sl. No.	PSEs	2006-07 (Actual)			2007-08 (Actual)			2008-09 (Actual)			2009-10 (Actual)			2010-11 (Anticipated)		
		Physical	Deemed	Total	Physical	Deemed	Total	Physical	Deemed	Total	Physical	Deemed	Total	Physical	Deemed	Total
1		2	3	4	5	6	7	8	9	10	11	12	13	14	15	16
1	AYCL	1.64	0.00	1.64	0.05	0.00	0.05	3.30		3.30	1.33		1.33	2.5		2.50
2	BHEL	1076.00	5525.00	6601.00	980.00	3660.00	4640.00	1794.00	6346.00	8140.00	1682	14527	16209.00	1930	11876	13806.00
3	BBUNL	0.00		0.00	3.97		3.97	0.11		0.11	0.02		0.02	0.14		0.14
4	BBJ			0.00	0.28		0.28	0.06		0.06			0.00			0.00
5	BPCL	0.00	6.81	6.81	0.00	0.63	0.63	0.00	0.15	0.15		4.66	4.66	42.79	0.38	43.17
6	R&C	0.00	6.81	6.81	0.00	0.63	0.63	0.00	0.00	0.00	0.00		0.00	0		0.00
7	B&R	2.23	0.00	2.23	0.52	0.00	0.52	13.82	0.00	13.82	33.22		33.22	25		25.00
8	HMT(I)	31.45	0.00	31.45	25.00	0.00	25.00	16.36	0.00	16.36	30.80		30.80	33.00		33.00
9	IL	0.21	2.10	2.31	0.13	0.14	0.27	1.02	9.79	10.81	0.67	16.99	17.66	1.00	18.00	19.00
10	REIL	4.05	1.27	5.32	7.73	0.79	8.52	0.81	1.97	2.78	0.02	2.60	2.62	1.1	2.4	3.50
11	SIL	0.41	0.00	0.41	0.87	0.00	0.87	0.43	0.00	0.43	0.24		0.24	0.75		0.75
12	HPC	0.00	40.76	40.76	0.00	15.94	15.94	0.00	34.02	34.02			0.00			0.00
13	HSL	0.56	0.00	0.56	0.64	0.00	0.64	0.79	0	0.79	0.28		0.28	0.62	0.95	1.57
14	EPIL	0.00	0.00	0.00	25.43	0.00	25.43	11.28	0.00	11.28	0		0.00	0		0.00
	Total	1116.55	5582.75	6699.30	1019.19	3678.13	4697.32	1841.98	6391.93	8233.91	1748.58	14551.25	16299.83	2036.90	11897.73	3934.63

Note: (i) 13 CPSEs namely, BPME, WIL, BBVL, TAFCO, CCIL, BLC, NBCIL, MAMC, NIDC, BOGL, RIC & BYNL have been closed and one CPSE (NPPC) is not in operation).

(ii) Braithwaite and BSCL have been transferred to Ministry of Railways/Ministry of Steel during August/September, 2010

**PAID UP CAPITAL, NETWORTH AND ACCUMULATED PROFIT(+)/LOSS(-) AS ON 31.3.2010
(Provisional) OF THE CPSEs UNDER DHI**

(₹ in crore)

Sl.No.	Name of CPSE	Paid up capital		Networth	Accumulated Profit (+)/Loss (-)
		Government/ Holding CPSE	Others		
1	2	3	4	5	6
1	AYCL	55.96	3.31	83.92	93.19
2	HOOGLY PTG	1.03		2.97	0.29
3	BHEL	331.51	158.01	15917.00	15428.00
4	BHPV	33.79		-238.54	-272.35
5	BBUNL	440.65		441.38	0.73
6	BBJ	20.27		21.93	1.66
7	BPCL	53.53		124.06	48.79
8	R&C	54.84		-320.96	-375.80
9	TSL	21.27		-559.84	-581.11
10	TSP	6.69	1.75	-284.94	-293.38
11	B&R	54.63	0.36	158.84	103.85
12	HCL	417.69	1.67	-3171.89	-3647.99
13	HEC	606.08		202.31	-528.42
14	HMT(Holding Co.)	751.85	8.50	697.24	506.11
15	HMT(Machine Tools)	719.60		-18.87	-761.12
16	HMT(Watches)	6.49		-1292.40	-1298.89
17	HMT(Chinar Watches)	1.66		-341.70	-343.36
18	HMT(Bearing)	37.47	0.24	43.42	-81.13
19	HMT(International)	0.72		25.48	24.76
20	IL	137.99	1.01	52.15	-62.41
21	REIL	2.08	2.17	20.53	15.26
22	SIL	51.01	2.47	-30.94	-84.51
23	CCI	811.41		-2113.61	-1008.23
24	HPC	662.70		883.32	78.34
25	HNL	100.00		-46.58	-58.60
26	HPF	185.67	19.19	-6828.41	-7056.39
27	HSL	25.56		24.53	-11.27
28	SSL	1.00		-0.58	-12.70
29	NEPA	108.21	0.65	-419.28	-528.25
30	TCIL	93.45		-161.23	-279.93
31	EPIL	35.42		153.68	108.59
TOTAL		5830.23	199.33	3022.99	-876.27

- Note:** (i) 13 CPSEs namely, BPME, WIL, BBVL, TAFCO, CCIL, BLC, NBCIL, MAMC, NIDC, BOGL, RIC & BYNL have been closed and one CPSE (NPPC) is not in operation.
(ii) Braithwaite and BSCL have been transferred to Ministry of Railways/Ministry of Steel during August/September, 2010.

Inputs sanctioned by the Govt. for revival/restructuring of CPSEs under DHI

As on 31.3.2010

(₹ crore)

S.No.	CPSE	Fresh GOI funds		Waivers/Conversions	GOI Guarantee	Total
		Capital Investment	Other			
1.	Hindustan Salts Ltd.,Jai pur	4.28	nil	66.32	nil	70.60
2.	Bridge & Roof Co.Ltd.,Kolkata	60.00	nil	42.92	nil	102.92
3.	BBJ Constn. Co. Ltd,Kolkata	nil	nil	54.61	nil	54.61
4.	Praga Tools Ltd,Secunderabad (AP)	5.00	nil	177.12	32.59	214.71
5.	Heavy Engg Corp,Ranchi	102.00	nil	1116.30	150.00	1368.30
6.	HMT (Bearings) Ltd,Hyderabad.	7.40	nil	26.57	17.40	51.37
7.	Braithwaite & Co. Ltd.,Kolkata	4.00	nil	112.91	nil	116.91
8.	Cement Corpn of India Ltd., New Delhi	30.67	153.62	1252.25	15.70	1452.24
9.	Bharat Pumps & Compressors Ltd.,Allahabad	nil	3.37	153.15	nil	156.52
10.	HMT (MT) Ltd.	180.00	543.00	157.80	—	880.80
11.	Andrew Yule & Co. Ltd	29.56	87.06	154.75	111.96	383.33
12.	National Instruments Ltd.	—	1.81	240.05	—	241.86
13.	Nagaland Pulp & Paper Co. Ltd*	251.26	38.19	126.98	252.99	669.42
14.	Tyre Corporation of India Ltd.	—	—	815.59	—	815.59
15.	Instrumentation Limited	—	—	504.36	45.00	549.36
16.	Burn Standard company Ltd.	—	25.43	1139.51	—	1164.94
	TOTAL	674.17	849.11	6141.19	629.01	8293.48

₹.108.18 crore for setting off the Capital reduction fund on account of reduction of existing paid up capital from ₹.120.20 crore to ₹12.02 by way of reduction of the face value of the share from ₹1000 per share to ₹.100 per share.

Important Audit observations from Comptroller & Auditor General Audit Report for 2009

Chapter — X of the Report No. CA 9 of 2009-10 is related to Department of heavy Industry.

Bharat Heavy Electricals Ltd.

1. Lack of coordination between the High Pressure Boiler Plant, Trichy and Boiler Auxiliaries Plant, Ranipet led to non-inclusion of Gates & Dampers in the budgetary prices and consequential absorption of unjustified expenditure of ₹ 8.17 crore by BHEL.

(para No. 10.1.1 – Report No. 9 of 2009-10)

Audit Report No. PA 10 of 2010-11

2. Procurement System

Bharat Heavy Electricals Limited (BHEL) is one of the largest engineering and manufacturing enterprises catering to the core sectors of Indian Economy viz. Power Generation & Transmission Industry, transportation, Telecommunication, Renewable Energy, etc. During the year 2008-09, the Company registered gross sales of ₹ 28.033 crore and material cost of around ₹ 15,600 crore. The performance audit of the procurements system of the company disclosed that there was scope of further improvement in the following areas:

- ◆ The cost of material purchased by the company as a percentage of turnover showed an increasing trend from 45.69 per cent in 2006-07 to 55.66 per cent in 2008-09. The management was yet to formulate a plan of action to arrest the rise in material cost. Rising material cost was, among other things, partly attributable to majority purchases by the company through limited tenders without establishing a solid vendor base. Only 8% of procurement was done by the Company through open tendering during the last three years ended March, 2009 and the balance was through limited/single tenders. In Bhopal, Haridwar, Hyderabad, PEM, Noida and Trichy Units there was only a single vendor registered for 538, 286, 16,302 and 8 material groups respectively. Many of the vendors registered with CII and CEA were not registered with the BHEL units.

- ◆ The Product Material Directories of the units were not being updated continuously, giving a false assurance of existence of optimum number of vendors.
- ◆ The Purchase policy and procedures were not revised since October, 1998 despite significant global changes affecting the business.
- ◆ In the absence of standard procedure for cost estimation, the units justified the price offers by applying escalation over the last purchase prices.
- ◆ In Haridwar, Hyderabad and Trichy Units, this exercise was being done after opening of price bids.
- ◆ The PEM unit awarded 17 works (₹. 26.80 crore) on a firm and its allied/sister concerns banned by Hyderabad Unit.
- ◆ No norms for purchase lead time had been fixed by units except Trichy Unit where targets of 60-days to 120 days for conversion of purchase requisition into purchase orders had been fixed. Audit observed that during three years ended March, 2009, in 54% cases, the time taken was more than 300 days.
- ◆ As per policy, repeat orders, without calling for fresh tenders could be placed provided there is no downward price trend. However, in Haridwar Unit in four products, the unit did not place repeat orders resulting in an extra expenditure of ₹ 29.09 crore.

(Report No. 10 of 2010-11) (Commercial)

HMT Machine Tools Limited

1. The process of sale of property belonging to Praga Tools Limited suffered from certain deficiencies viz (i) non compliance with the tender conditions in accepting a defective bid document and (ii) failure to initiate timely action to shift the factory to the new premises resulting in delay in realization of sale proceeds and consequent loss of interest of ₹. 1.24 crore.

(Para No.10.2.1 – Report No. 9 of 2009-10)

Abbreviations

AAIFR	Appellate Authority of Industrial & Financial Reconstruction
ACMA	Automotive Component Manufacturers Association
ARAI	Automotive Research Association of India
AYCL	Andrew Yule & Company
BBJ	Braithwaite, Burn & Jessop Construction Company Limited
BBUNL	Bharat Bhari Udyog Nigam Limited
BHEL	Bharat Heavy Electricals Limited
BHPV	Bharat Heavy Plate & Vessels Limited
BIFR	Board of Industrial & Finance Reconstruction
BLC	Bharat Leather Corporation Limited
BOGL	Bharat Ophthalmic Glass Limited
BPCL	Bharat Pumps & Compressors Limited
BPME	Bharat Process & Mechanical Engineers Limited
BCL	Braithwaite & Company Limited
BWEL	Bharat Wagon & Engineering Company Limited
BYNL	Bharat Yantra Nigam Limited
BRPSE	Board for Reconstruction of Public Sector Enterprises
C-DOT	Centre for Development of Telematics
CCI	Cement Corporation of India Limited
CCIL	Cycle Corporation of India Limited
CEA	Central Electricity Authority
CCEA	Cabinet Committee on Economic Affairs
CNC	Computer Numerically Controlled
CPSE	Central Public Sector Enterprise
CPIO	Central Public Information Officer
CPLY	Corresponding Period Last Year
DOE	Department of Electronics
EEC	European Economic Community
EFV	Environmentally Friendly Vehicle
EOT	Electrically Operated Trolley
EPC	Engineering Procurement and Construction
EPI	Engineering Projects (India) Limited
EEPC	Engineering Export Promotion Council
FBP	Fluidized Bed Combustion
FCRI	Fluid Control Research Institute
FFP	Foundry Forge Plant
HCL	Hindustan Cables Limited
HMBP	Heavy Machine Building Plant
HMT(I)	HMT (International) Limited
HMTF	Heavy Machine Tools Plant
HPC	Hindustan Paper Corporation Limited
HNL	Hindustan Newsprint Limited
HPF	Hindustan Photo Films Manufacturing Company Limited
HSL	Hindustan Salts Limited
IL	Instrumentation Limited
ISRO	Indian Space Research Organization

ICGCC	Integrated Coal Gasification Combined Cycle
JPML	Jagdishpur Paper Mills Limited
JVC	Joint Venture Company
JESSOP	Jessop Company Limited
JNNURM	Jawaharlal Nehru National Urban Renewal Mission
KV	Kilo Volt
KW	Kilo Watt
LAGAN JUTE	Lagan Jute Machinery Company Limited
OA	Operating Agency
MAMC	Mining & Allied Machinery Corporation Limited
MAX	Main Automatic Exchange
MoU	Memorandum of Understanding
MoHI&PE	Minister of Heavy Industries & Public Enterprises
MOEF	Ministry of Environment & Forests
MoPNG	Ministry of Petroleum & Natural Gas
MoSRT&H	Ministry of Shipping, Road Transport & Highways
MT	Metric Tonne
MUL	Maruti Udyog Limited
MVA	Mega Volt Amperes
MW	Mega Watt
NBCIL	National Bicycle Corporation of India Limited
NC	Numerically Controlled
NEPA	NEPA Limited
NPCIL	Nuclear Power Corporation of India Limited
NIDC	National Industrial Development Corporation Limited
NATRIP	National Automotive Testing and Research & Development Infrastructure Project
PSE	Public Sector Enterprise
PWD	Persons With Disabilities
PTL	Praga Tools Limited
R&C	Richardson & Cruddas (1972) Limited
RDSO	Research Design & Standard Organization
RIC	Rehabilitation Industries Corporation Limited
RSW	Radiation Shielding Window
RTI	Right to Information Act
SIAM	Society of Indian Automobile Manufacturers
SIL	Scooters India Limited
SIAT	Symposium on International Automotive Technology
SSL	Sambhar Salts Limited
TAFCO	Tannery & Footwear Corporation of India Limited
TCIL	Tyre Corporation of India Limited
TSL	Triveni Structural Limited
TSP	Tungabhadra Steel Products Limited
UNDP	United Nations Development Programme
UNIDO	United Nations Industrial Development Organizations
VRS	Voluntary Retirement Scheme
VRDE	Vehicle Research Development Establishment
WIL	Weighbird (India) Limited.
WP	Working Party